

Technical specifications

Load capacity:

The load capacity of the ball bearing is specified as load rating C in daN and tested under following conditions:

- 200mm roller length (short roller)
- axis fixed restrained
- rotational speed 100min⁻¹ - 200min⁻¹
- 1.000.000 revolutions (load change)

Service life:

From the load capacity the service life of the ball bearing could be calculated with following formula:

$$Lh = \frac{1000000}{60 \times n} \left(\frac{C}{P} \right)^p$$

Herein are:

- L_h: nominal service life [h]
- C: dynamic load rating [N]
- n: revolutions [min⁻¹]
- P: dynamic bearing load [N]
(P = C in case of radial load only)
- p: exponent of service life equation
(for ball bearing is considered p=3)

Plastics:

Polypropylen (PP)

- good mechanical characteristic
- excellent shock resistance

Polyacetal (POM)

- high hardness and stiffness
- low absorbtion of humidity
- good friction and abrasion characteristic

Polyamid (PA)

- tenacious/rigid
- very good mechanical characteristic and abrasion resistance

Antistatic Plastics

- PP
- POM

The use of antistatic plastics is only permissible in the provided temperature range. We can not give any guarantee for the conductivity.

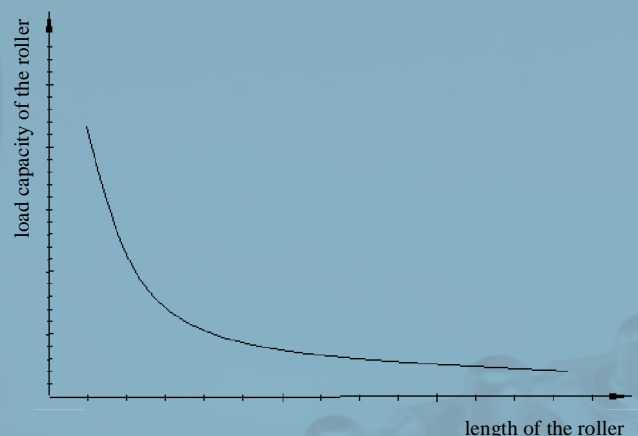
Attention: Do not use in explosion-proofed areas !!!

Affecting conditions:

Under different conditions the roller manufacturer has to determine the real new load capacity of the roller by himself. Kindly note that the service life and the load capacity of your roller will be determined by:

- roller length
- axis diameter
- style of the axis
- environment influences











Influence of the roller length for the load rating:



Lubricants:

Our ball bearings are equipped with high quality lubricants. Furthermore our special greases and oils can reach a temperature range from -45°C to +180°C. Our tested lubricants are best proved for many years under every conditions. In a given case please ask for the optimal lubricants recommended by MRT.

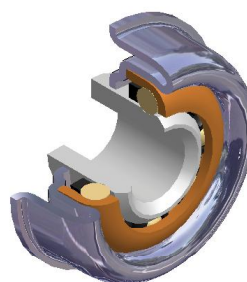
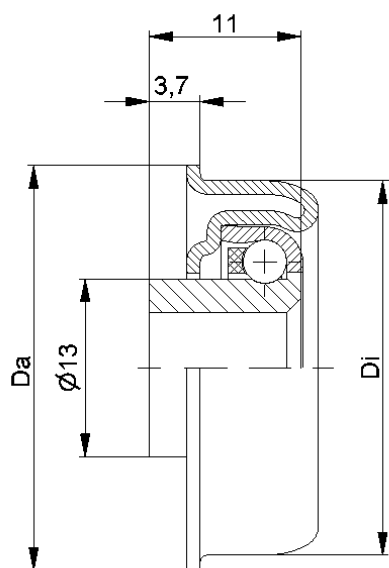
Content

Metal roller bearings MTR up to 150 daN		1
Metal roller bearings MTS up to 250 daN		2
Plastic roller bearings KTR up to 10 daN		3
Plastic roller bearings KTR/KTE up to 150 daN		4
Skate Wheels KLR/SLR/SR		5
Retainer for standard bearings LH/KLH/FL/Attachment		6
Sprockets Sprocket wheels/Belt drive wheels		7
Components Sprocket wheels/Belt drive wheels		8
Special bearings Radial ball bearings		9
Additional Products Ball Transfer Unit/Poly directional wheel/Brake roller unit/Metal Roller		10

Metal roller bearings MTR up to 150 daN



MTR



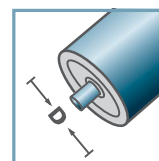
MTR-16			
Type	Di ±0.1	Da ±0.2	Load Rating C [daN]
MTR-30x1,2.16	27,6	29,6	30
MTR-30x1,5.16	27,3	29,6	30

Other dimensions on request!

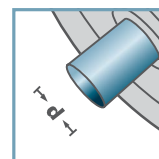
- ☛ Housing: Steel, Zinc plated
- ☛ Bearing RL-16
 - ☛ Bearing Shell: Steel, Hardened
 - ☛ Inner Race: Steel, Hardened, Zinc plated
 - ☛ Ball Cage: Plastic
 - ☛ Ball: Steel



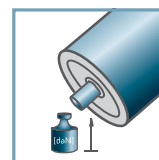
MTR-16



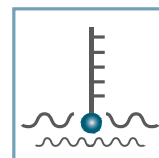
D [mm]
30



d [mm]
6; 8; 10



C [daN]
30



T [°C]
-45° - 100°



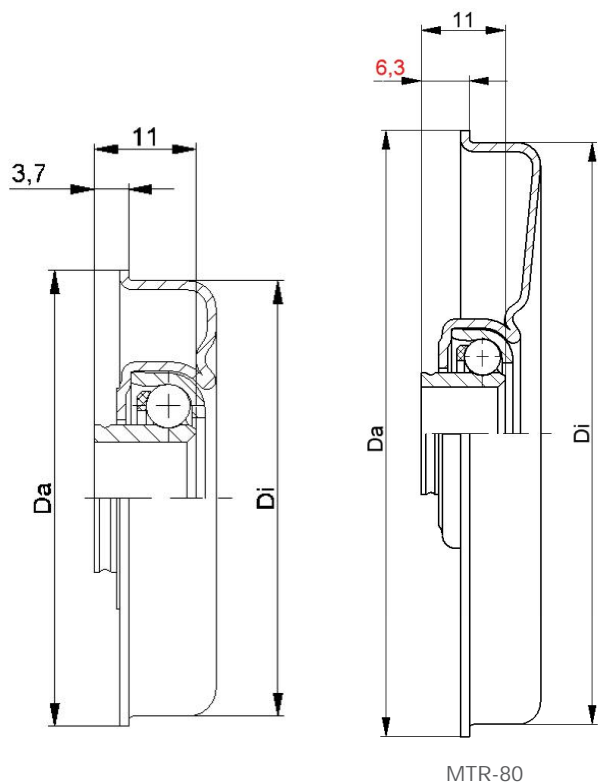
Oil



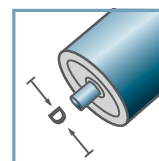
Carton [pcs.]

500

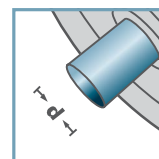
MTR



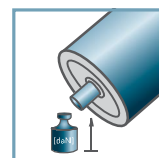
MTR-20



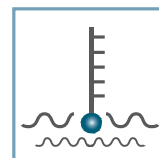
D [mm]
40 - 80



d [mm]
8; 10; 12; SW11



C [daN]
80



T [°C]
-45° - 100°



Oil



Carton [pcs.]

ø40: 250
ø48: 100/350
ø50: 100/350
ø60: 200
ø80: 100

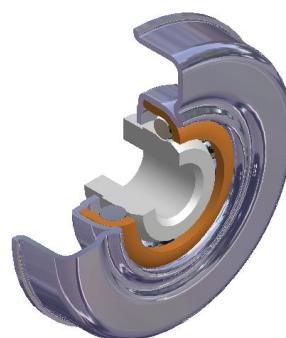
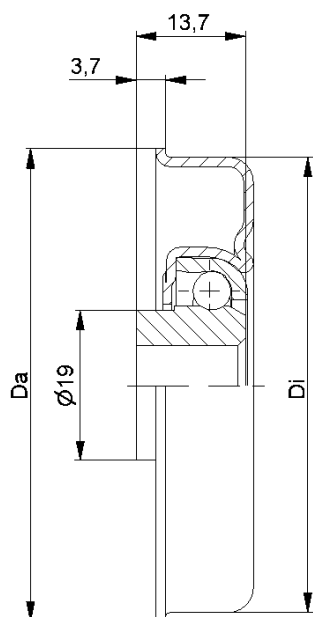
MTR-20			
Type	Di ±0.1	Da ±0.2	Load Rating C [daN]
MTR-40x1,5.20	37,3	39,5	80
MTR-40x2,0.20	36,3	39,5	80
MTR-48x1,5.20	45,3	47,5	80
MTR-50x1,5.20	47,3	49,5	80
MTR-50x2,0.20	46,3	49,5	80
MTR-60x1,5.20	57,3	59,5	80
MTR-60x2,0.20	56,3	59,5	80
MTR-80x2,0.20	76,4	79,5	80

Other dimensions on request!

- ☛ Housing: Steel, Zinc plated
- ☛ Bearing RL-20
 - ☛ Bearing Shell: Steel, Hardened
 - ☛ Inner Race: Steel, Hardened, Zinc plated
 - ☛ Ball Cage: Plastic
 - ☛ Ball: Steel



MTR



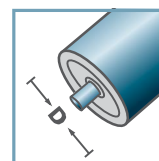
MTR-30-2			
Type	Di ±0.1	Da ±0.2	Load Rating C [daN]
MTR-50x1,5.30-2	47,3	49,5	120
MTR-50x2,0.30-2	46,3	49,5	120
MTR-60x1,5.30-2	57,3	59,5	120
MTR-60x2,0.30-2	56,3	59,5	120
MTR-80x2,0.30-2	76,4	79,5	120

Other dimensions on request!

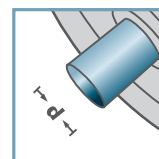
- Housing: Steel, Zinc plated
- Bearing RL-30-2
 - Bearing Shell: Steel, Hardened
 - Inner Race: Steel, Hardened
 - Ball: Steel



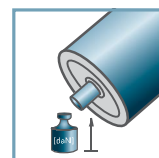
MTR-30-2



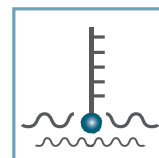
D [mm]
50 - 80



d [mm]
10;12; 14; 15;
SW11



C [daN]
120



T [°C]
0° - 100°



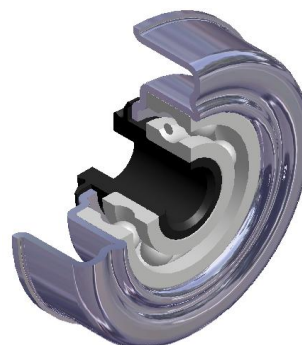
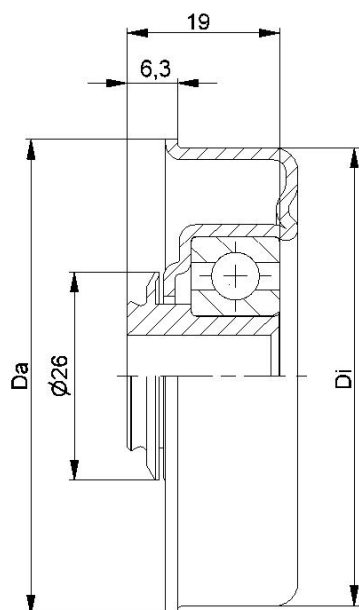
EP 0



Carton [pcs.]

ø50: 300
ø60: 200
ø80: 100

MTR



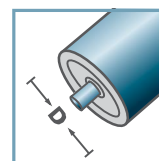
MTR-40			
Type	Di ±0.1	Da ±0.2	Load Rating C [daN]
MTR-50x1,5.40	47,3	49,5	120
MTR-50x2,0.40	46,3	49,5	120
MTR-60x1,5.40	57,3	59,5	150
MTR-60x2,0.40	56,3	59,5	150
MTR-60x3,0.40	54,3	59,5	150
MTR-80x2,0.40	76,5	79,5	150

Other dimensions on request!

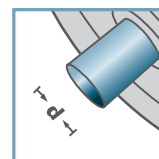
- Housing: Steel, Zinc plated
- Reducing Bush: Plastic
- Bearing 6202



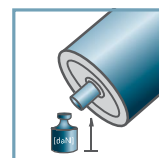
MTR-40



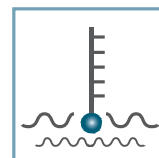
D [mm]
50 - 80



d [mm]
10; 12; SW11



C [daN]
120 - 150



T [°C]
0° - 80°



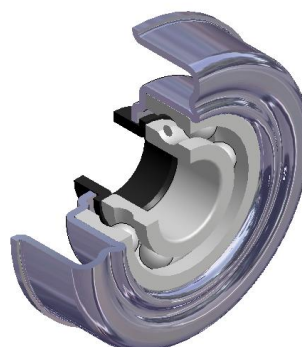
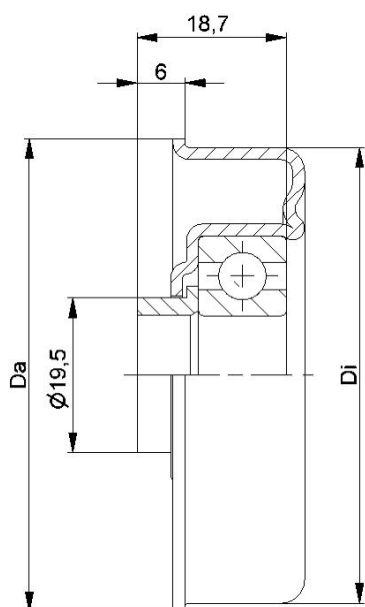
EP 2



Carton [pcs.]

ø50: 100
ø60: 150
ø80: 100

MTR



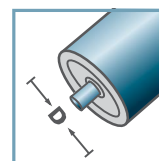
MTR-40.15			
Type	Di ±0.1	Da ±0.2	Load Rating C [daN]
MTR-50x1,5.40.15	47,3	49,5	120
MTR-50x2,0.40.15	46,3	49,5	120
MTR-60x1,5.40.15	57,3	59,5	150
MTR-60x2,0.40.15	56,3	59,5	150
MTR-60x3,0.40.15	54,3	59,5	150
MTR-80x2,0.40.15	76,5	79,5	150

Other dimensions on request!

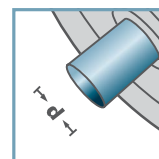
- Housing: Steel, Zinc plated
- Distance Bush: Plastic
- Bearing 6202



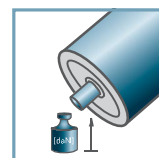
MTR-40.15



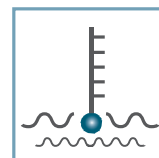
D [mm]
50 - 80



d [mm]
15



C [daN]
120 - 150



T [°C]
0° - 80°



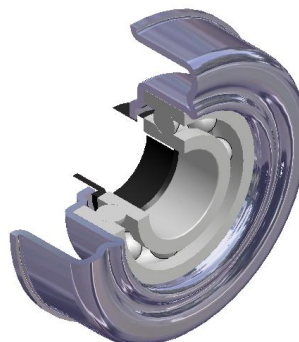
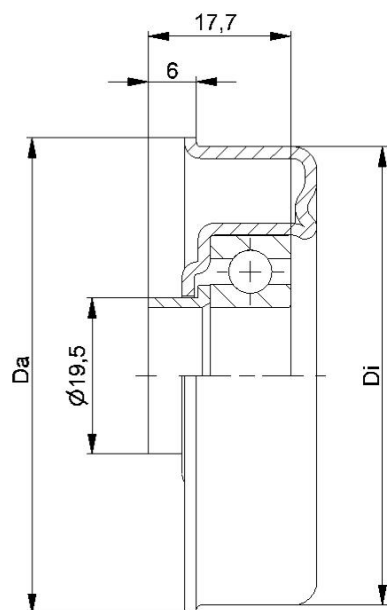
EP 2



Carton [pcs.]

ø50: 100
ø60: 150
ø80: 100

MTR



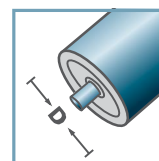
MTR-45.17			
Type	Di ±0.1	Da ±0.2	Load Rating C [daN]
MTR-50x1,5.45.17	47,3	49,5	120
MTR-60x2,0.45.17	56,3	59,5	150
MTR-60x3,0.45.17	54,3	59,5	150
MTR-80x2,0.45.17	76,5	79,5	150

Other dimensions on request!

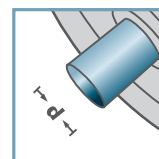
- Housing: Steel, Zinc plated
- Distance Bush: Plastic
- Bearing 6003



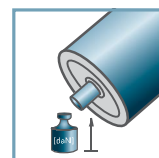
MTR-45.17



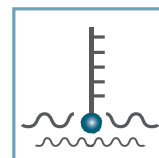
D [mm]
50, 80



d [mm]
17



C [daN]
120 - 150



T [°C]
0° - 80°



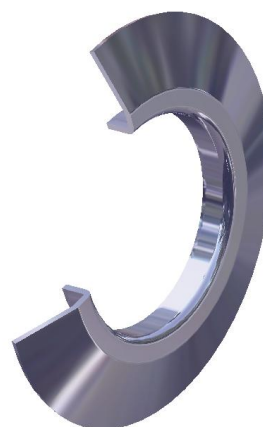
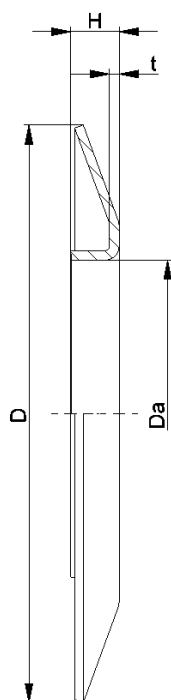
EP 2



Carton [pcs.]

ø50: 100
ø60: 150
ø80: 100

MTR



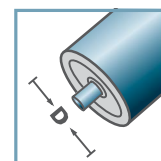
BS-				
Type	Da ±0.1	D -2	H ±0.5	t
BS-50-130	49,9	130	10	1,5
BS-60-130	59,9	130	10	1,5
BS-80-150	79,9	150	14	2,5
BS-89-150	88,9	150	14	2,5
BS-108-150	107,9	150	14	2,5

Other dimensions on request!

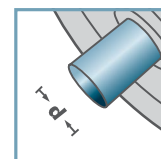
Wheel Flange: Steel



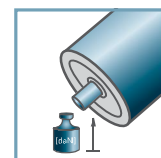
BS-



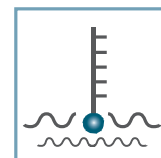
D [mm]
50 - 108



d [mm]
-



C [daN]
-



T [°C]
-



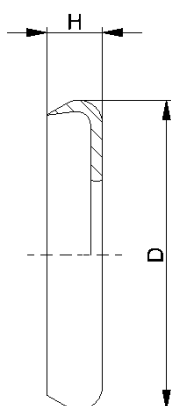
-



Carton [pcs.]



MTR

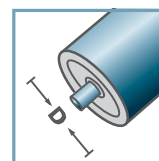


DK-MTR		
Type	D	H
DK-MTR-20	34	7
DK-MTR-30-2	39	7
Other dimensions on request!		

Seal Bonnet: Plastic

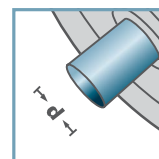


DK-MTR-



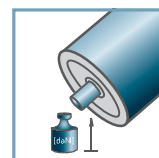
D [mm]

-



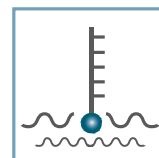
d [mm]

-



C [daN]

-



T [°C]
0° - 80°



-



Carton [pcs.]

/

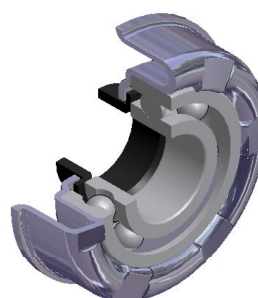
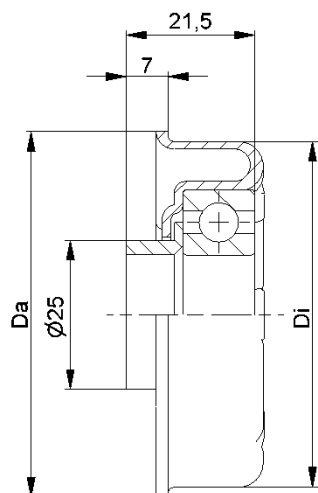
MTR

Metal roller bearings MTS up to 250 daN

2

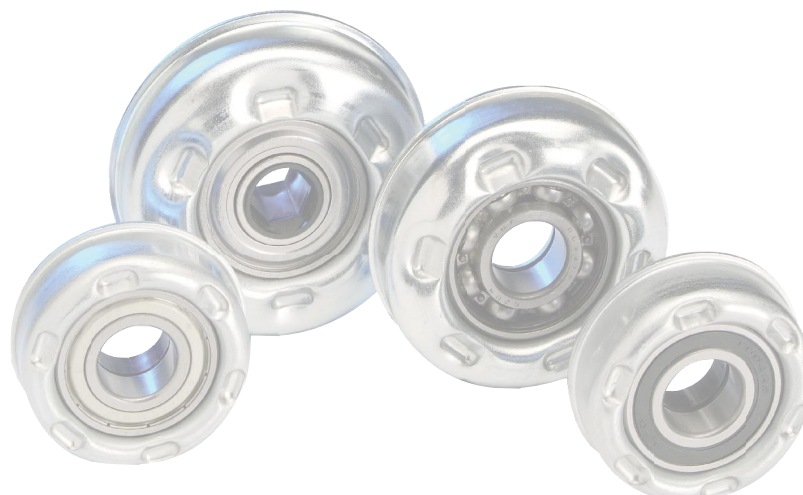


MTS

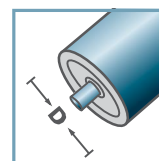


MTS-46			
Type	Di ±0.1	Da ±0.2	Load Rating C [daN]
MTS-63,5x2,9.46	58,1	61,5	200
Other dimensions on request!			

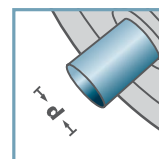
- ☛ Housing: Steel, Zinc plated
- ☛ Distance Bush: Plastic
- ☛ Bearing 6004



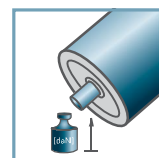
MTS-46



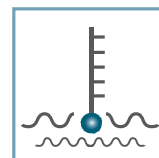
D [mm]
63,5



d [mm]
20



C [daN]
200



T [°C]
0° - 100°



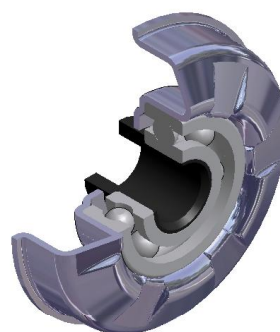
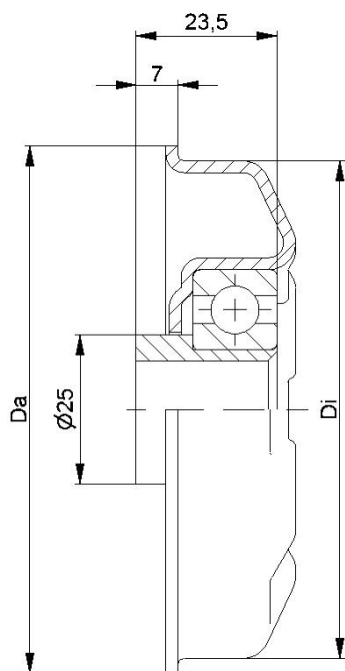
EP 2



Carton [pcs.]

50/100

MTS



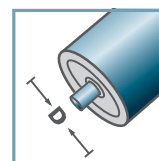
MTS-44			
Type	Di ±0.1	Da ±0.2	Load Rating C [daN]
MTS-80x2,0.44	76,5	79,5	250
MTS-80x3,0.44	74,5	79,5	250
MTS-89x3,0.44	83,5	88,5	250
MTS-89x3,25.44	83,0	88,5	250
MTS-108x3,25.44	102,0	107,5	250

Other dimensions on request!

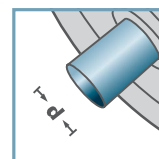
- Housing: Steel, Zinc plated
- Reducing Bush: Plastic
- Bearing 6204



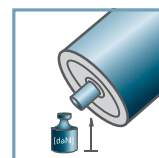
MTS-44



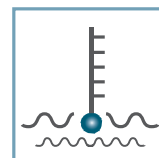
D [mm]
80 - 108



d [mm]
16; 17; SW14



C [daN]
250



T [°C]
0° - 100°



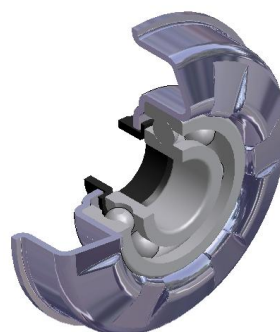
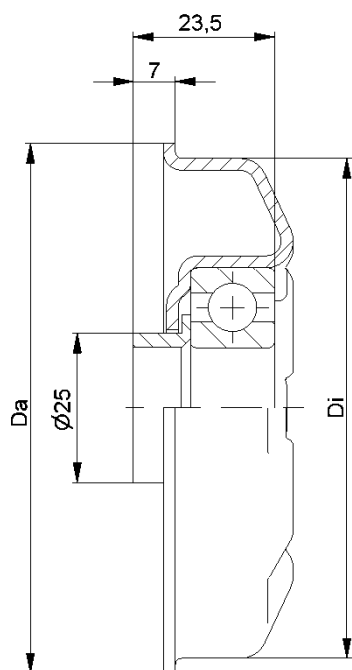
EP 2



Carton [pcs.]

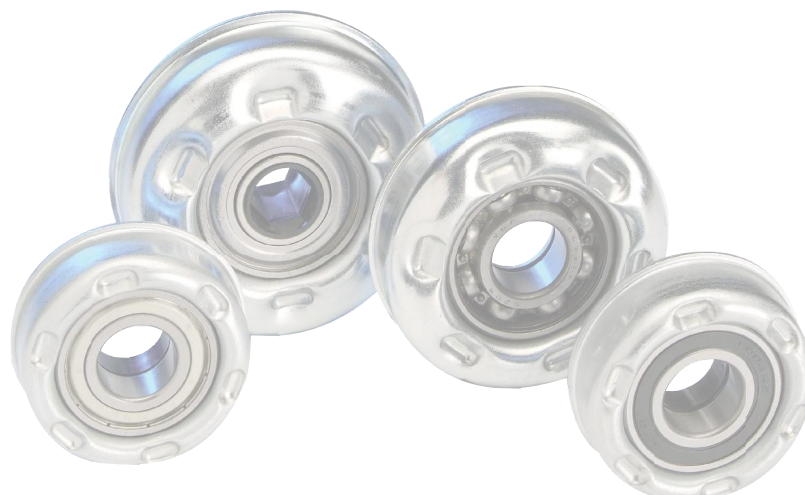
50

MTS

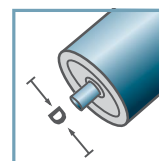


MTS-44			
Type	Di ±0.1	Da ±0.2	Load Rating C [daN]
MTS-80x2,0.44	76,5	79,5	250
MTS-80x3,0.44	74,5	79,5	250
MTS-89x3,0.44	83,5	88,5	250
MTS-89x3,25.44	83,0	88,5	250
MTS-108x3,25.44	102,0	107,5	250
Other dimensions on request!			

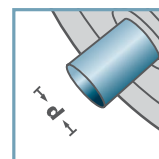
- Housing: Steel, Zinc plated
- Distance Bush: Plastic
- Bearing 6204



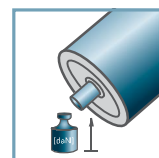
MTS-44



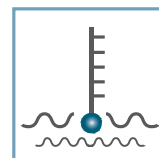
D [mm]
80 - 108



d [mm]
20



C [daN]
250



T [°C]
0° - 100°



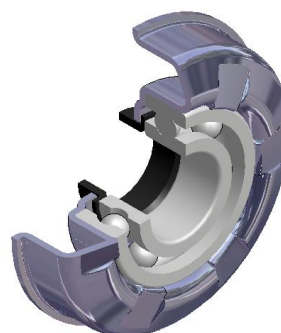
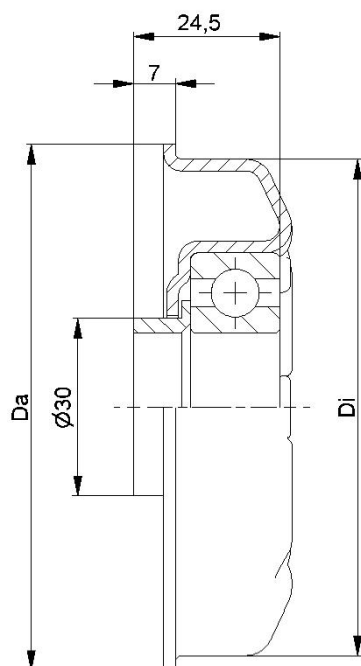
EP 2



Carton [pcs.]

50

MTS



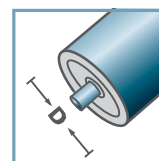
MTS-47			
Type	Di ±0.1	Da ±0.2	Load Rating C [daN]
MTS-89x3,0.47	83,5	88,5	250
MTS-108x3,25.47	102,0	107,5	250

Other dimensions on request!

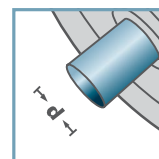
- ☛ Housing: Steel, Zinc plated
- ☛ Distance Bush: Plastic
- ☛ Bearing 6205



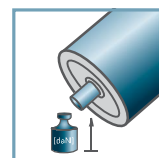
MTS-47



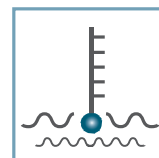
D [mm]
89 - 108



d [mm]
25



C [daN]
250



T [°C]
0° - 100°



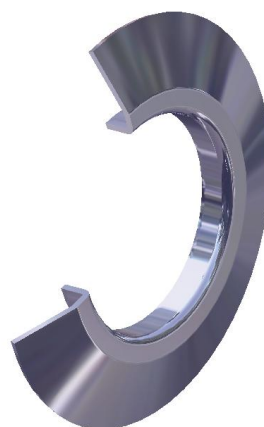
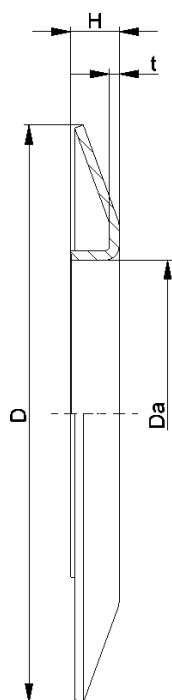
EP 2



Carton [pcs.]

50

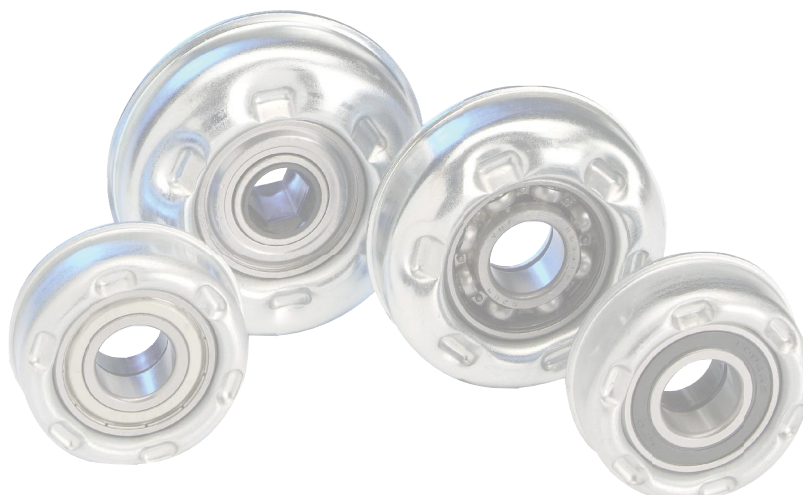
MTS



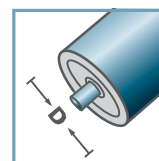
BS-				
Type	Da ±0.1	D -2	H ±0.5	t
BS-50-130	49,9	130	10	1,5
BS-60-130	59,9	130	10	1,5
BS-80-150	79,9	150	14	2,5
BS-89-150	88,9	150	14	2,5
BS-108-150	107,9	150	14	2,5

Other dimensions on request!

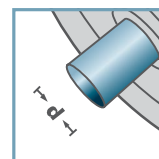
Wheel Flange: Steel



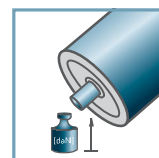
BS-



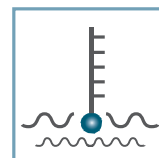
D [mm]
50 - 108



d [mm]
-



C [daN]
-



T [°C]
-



-



Carton [pcs.]



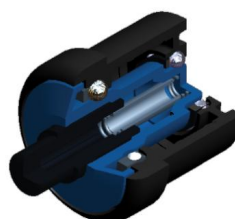
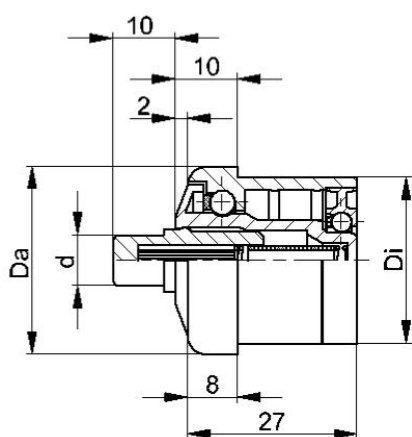
MTS

Plastic roller bearings KTR up to 10 daN

3



KTR

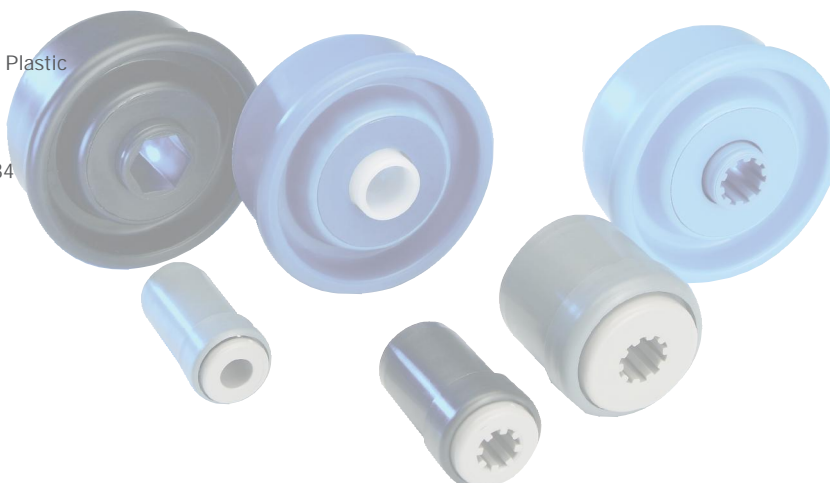
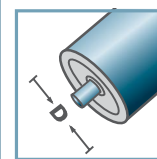
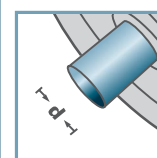
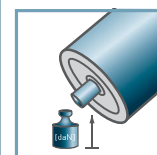
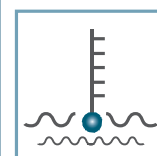


KTR-.00/.01 FA

Type	Normal .00	Stainless .01	Di +0,25	Da	d	Load Rating C [daN]
KTR-20x1,5	x	x	17,1	19,9	6	8
KTR-30x1,8	x	x	26,5	29,9	8/10	10
KTR-40x2,3	x	x	35,5	39,9	8/10	10
KTR-50x1,5	x	x	47,3	49,9	8/10	20
KTR-50x2,8	x	x	44,6	49,9	8/10	20

Other dimensions on request!

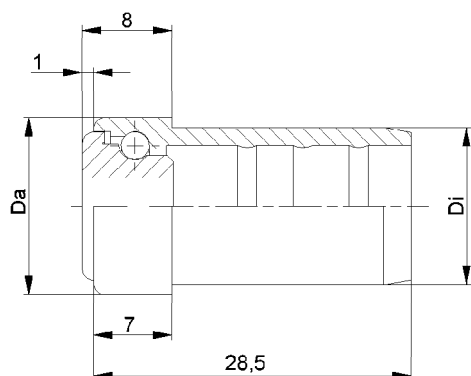
- ☛ Housing: Plastic
- ☛ Inner Race: Plastic
- ☛ Ball Cage: Plastic
- ☛ Shaft: Plastic
- ☛ Bearing Flange: Plastic
- ☛ Ball, Spring
 - ☛ 00: Steel
 - ☛ 01: 1.4034

KTR-.00 FA
KTR-.01 FAD [mm]
20, 30, 40, 50d [mm]
6; 8; 10C [daN]
8 - 20T [°C]
0° - 80°

Carton [pcs.]

ø20: 400
 ø30: 250/500
 ø40: 250/500
 ø50: 200

KTR

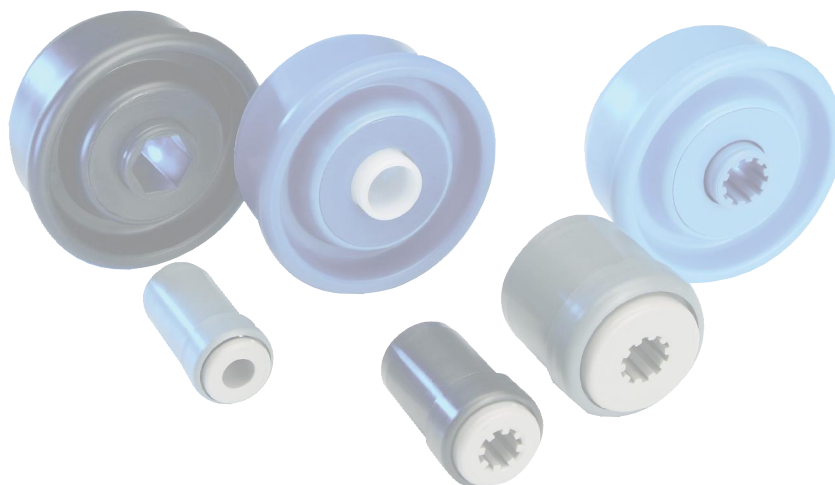
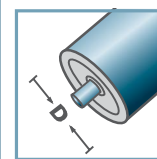
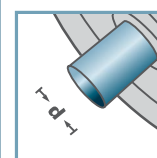
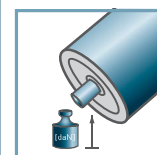
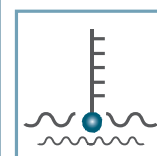


KTR-16.00/.01

Type	Normal .00	Stainless .01	Di +0,15	Da	Load Rating C [daN]
KTR-16x1,0	x	x	14,1	15,9	3

Other dimensions on request!

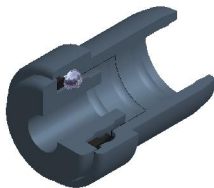
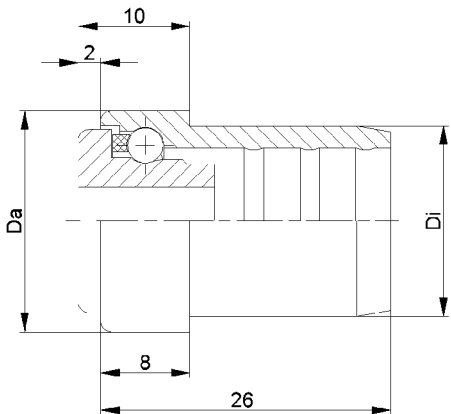
- ☛ Housing: Plastic
- ☛ Inner Race: Plastic
- ☛ Ball
 - ☛ 00: Steel
 - ☛ 01: 1.4034

KTR-16.00
KTR-16.01D [mm]
16d [mm]
5; 6C [daN]
3T [°C]
0° - 80°

Carton [pcs.]

500/2500

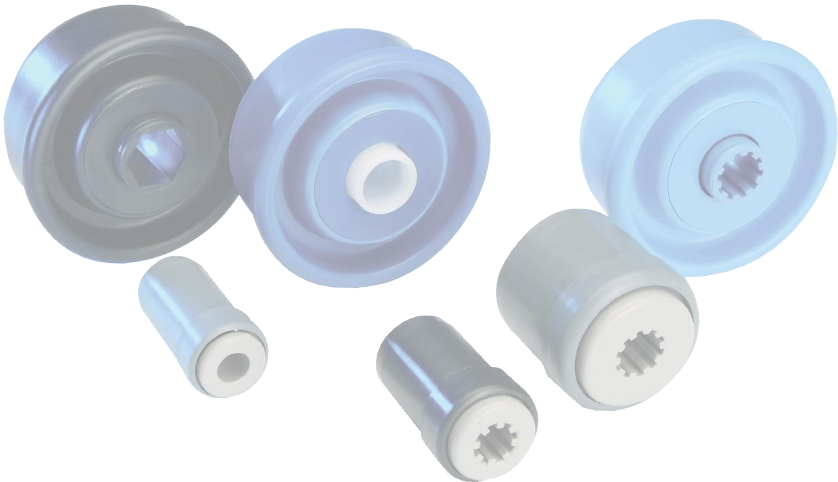
KTR



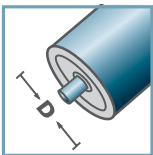
KTR-20.00/.01					
Type	Normal .00	Stainless .01	Di +0,15	Da	Load Rating C [daN]
KTR-20x1,0	x	x	18,1	19,9	5
KTR-20x1,5	x	x	17,1	19,9	5

Other dimensions on request!

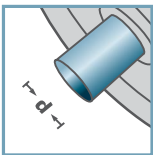
- ☛ Housing: Plastic
- ☛ Inner Race: Plastic
- ☛ Ball Cage: Plastic
- ☛ Ball
 - ☛ 00: Steel
 - ☛ 01: 1.4034



KTR-20.00
KTR-20.01



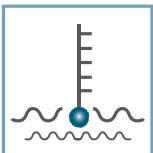
D [mm]
20



d [mm]
6; 8



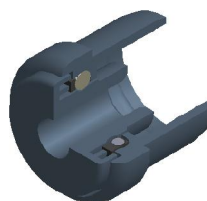
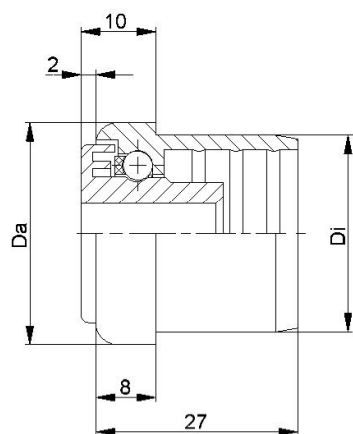
C [daN]
5



T [°C]
0° - 80°



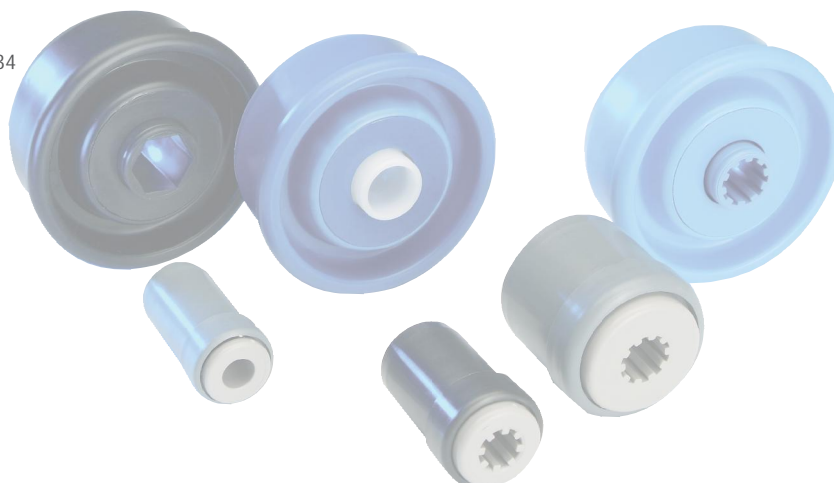
Carton [pcs.]
500/1000



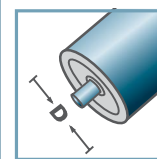
KTR-30.00/.01					
Type	Normal .00	Stainless .01	Di +0,25	Da	Load Rating C [daN]
KTR-30x1,0	x	x	28,1	29,9	7
KTR-30x1,5	x	x	27,1	29,9	7
KTR-30x1,8	x	x	26,5	29,9	7
KTR-30x2,0	x	x	26,35	29,9	7

Other dimensions on request!

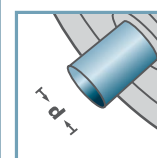
- ☛ Housing: Plastic
- ☛ Inner Race: Plastic
- ☛ Ball Cage: Plastic
- ☛ Ball
 - ☛ 00: Steel
 - ☛ 01: 1.4034



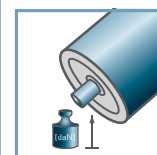
KTR-30.00
KTR-30.01



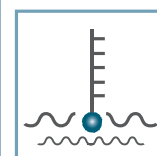
D [mm]
30



d [mm]
6; 8; 10



C [daN]
7

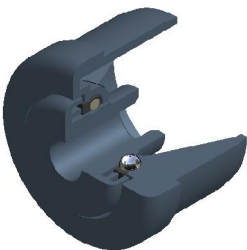
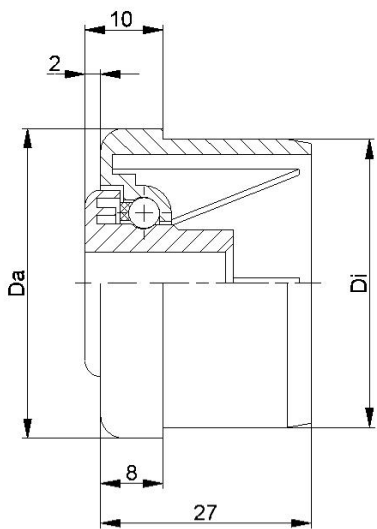


T [°C]
0° - 80°



Carton [pcs.]
250/500

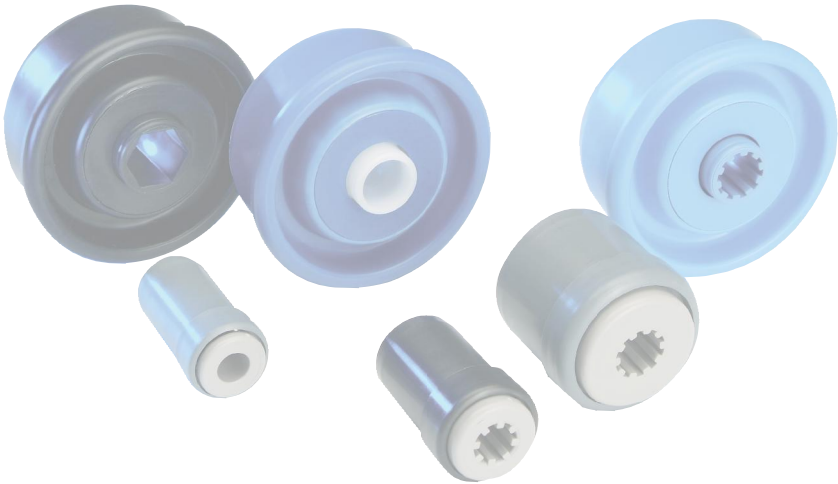
KTR



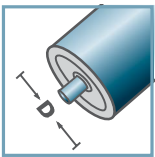
KTR-40.00/.01					
Type	Normal .00	Stainless .01	Di +0,25	Da	Load Rating C [daN]
KTR-40x1,5	x	x	37,1	39,9	7
KTR-40x2,3	x	x	35,5	39,9	7

Other dimensions on request!

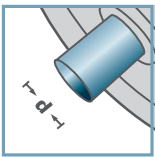
- ☛ Housing: Plastic
- ☛ Inner Race: Plastic
- ☛ Ball Cage: Plastic
- ☛ Ball
 - ☛ 00: Steel
 - ☛ 01: 1.4034



KTR-40.00
KTR-40.01



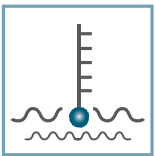
D [mm]
40



d [mm]
6; 8; 10



C [daN]
7



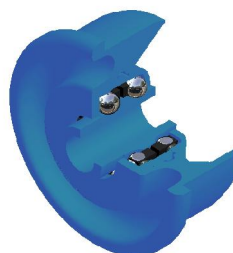
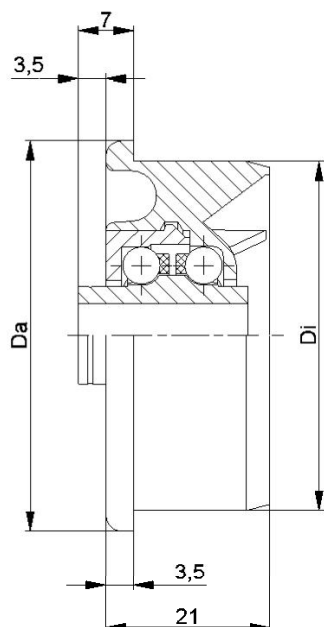
T [°C]
0° - 80°



Carton [pcs.]

250

KTR

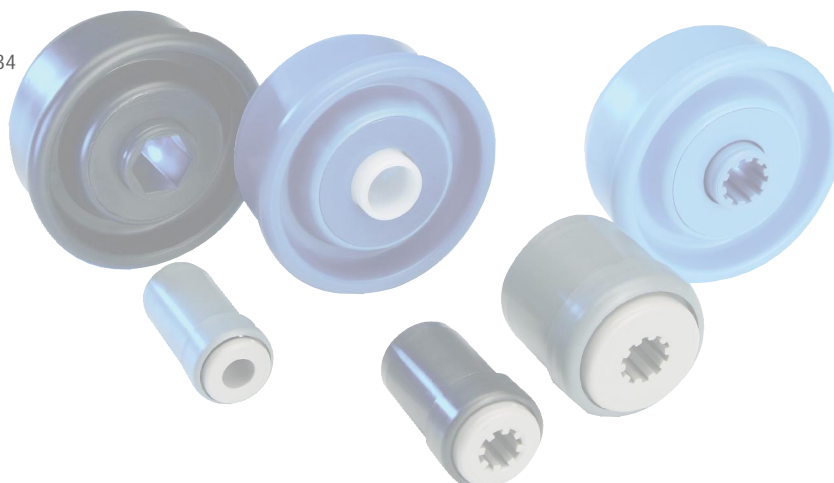
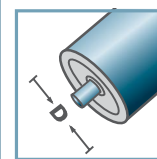
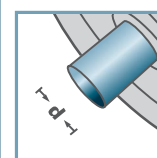
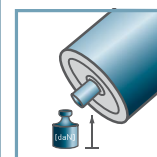
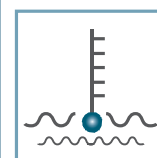


KTR-02/03

Type	Normal .02	Stainless .03	Di +0,2	Da	Load Rating C [daN]
KTR-50x1,5	x	x	47,3	49,9	15
KTR-50x2,0	x	x	46,3	49,9	15
KTR-50x2,8	x	x	44,6	49,9	15

Other dimensions on request!

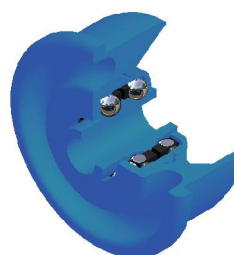
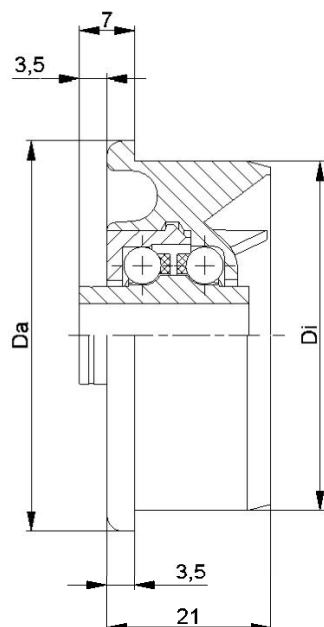
- ☛ Housing: Plastic
- ☛ Inner Race: Plastic
- ☛ Bearing Cap: Plastic
- ☛ Ball Cage: Plastic
- ☛ Ball
 - ☛ 02: Steel
 - ☛ 03: 1.4034

KTR-02
KTR-03D [mm]
50d [mm]
8; 10C [daN]
15T [°C]
0° - 80°

Carton [pcs.]

50x1,5: 250
50x2,0: 250
50x2,8: 250

KTR

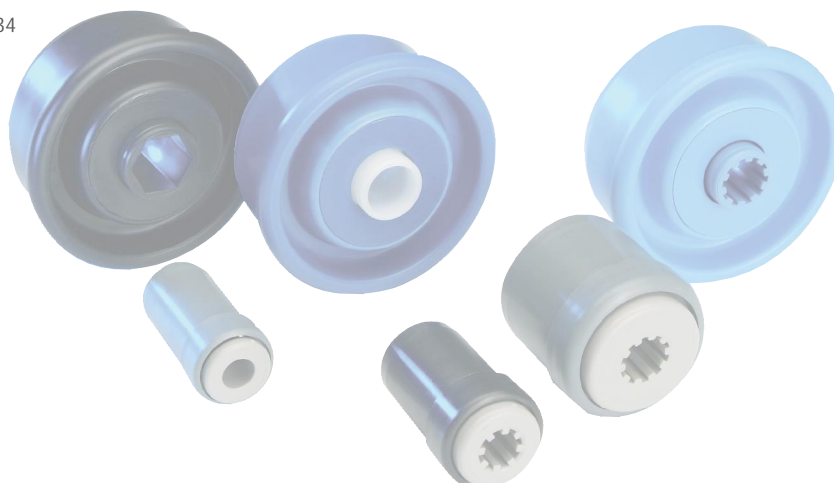
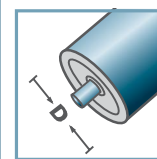
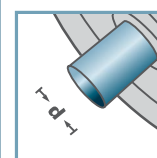
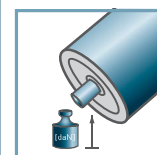
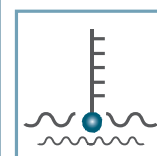


KTR-02/03

Type	Normal .02	Stainless .03	Di +0,2	Da	Load Rating C [daN]
KTR-50x1,5	x	x	47,3	49,9	10
KTR-50x2,8	x	x	44,6	49,9	10

Other dimensions on request!

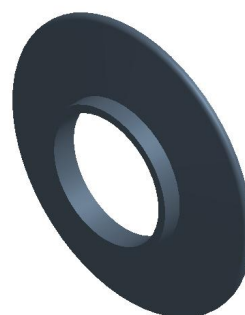
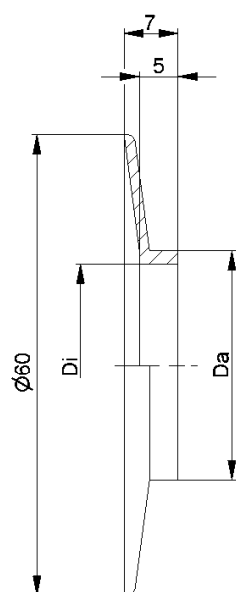
- ☛ Housing: Plastic
- ☛ Inner Race: Plastic
- ☛ Bearing Cap: Plastic
- ☛ Ball Cage: Plastic
- ☛ Ball
 - ☛ 02: Steel
 - ☛ 03: 1.4034

KTR-02
KTR-03D [mm]
50d [mm]
12; SW11C [daN]
10T [°C]
0° - 80°

Carton [pcs.]

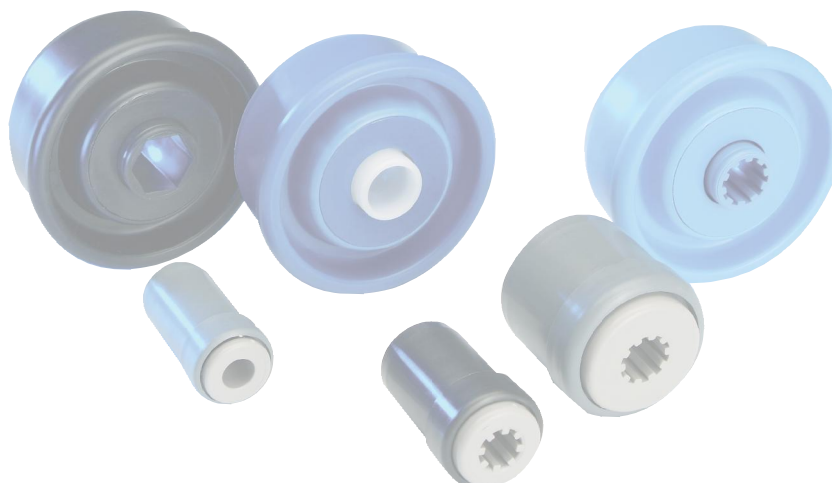
250

KTR

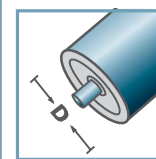


BS-		
Type	Di	Da
BS-30x1,8	26,5	29,9
BS-40x1,5	37,1	39,9
BS-40x2,3	35,5	39,9
Other dimensions on request!		

🔧 Wheel Flange: Plastic

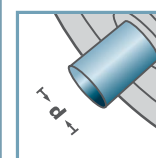


BS-



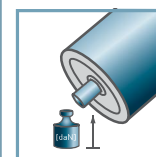
D [mm]

-



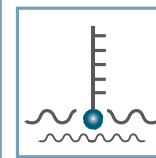
d [mm]

-



C [daN]

-



T [°C]

0° - 80°



-



Carton [pcs.]

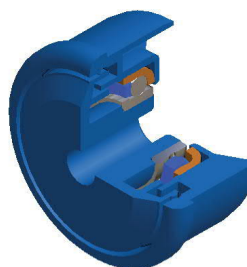
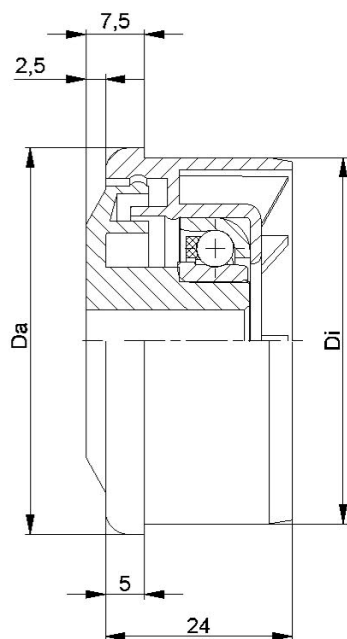
/

KTR

Plastic roller bearings KTR/KTE up to 150 daN



KTR/KTE

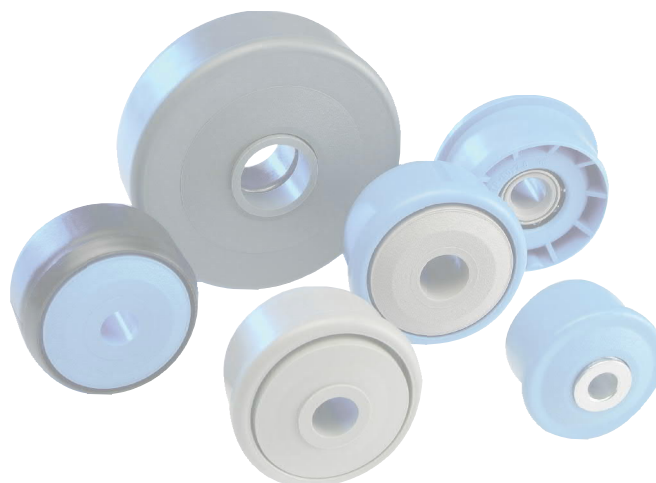


KTR-30			
Type	Di +0,2	Da	Load Rating C [daN]
KTR-50x1,5.30	47,3	49,9	80
KTR-50x2,8.30	44,6	49,9	80
KTR-60x1,5.30	57,3	59,9	80

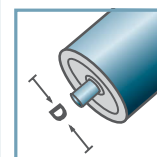
Other dimensions on request!

- ☛ Housing: Plastic
- ☛ Single Labyrinth Seal: Plastic
- ☛ Bearing RL-30
 - ☛ Bearing Shell: Steel, Hardened
 - ☛ Inner Race: Steel, Hardened
 - ☛ Ball Cage: Plastic
 - ☛ Ball: Steel

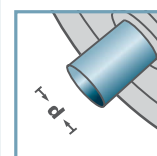
Please note: the single labyrinth seal for axis 15 mm is delivered separately and has to be locked at assembly.



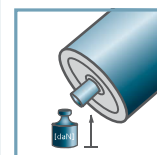
KTR-30



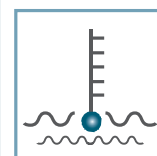
D [mm]
50 - 60



d [mm]
10; 12; 15; SW11



C [daN]
80



T [°C]
0° - 80°



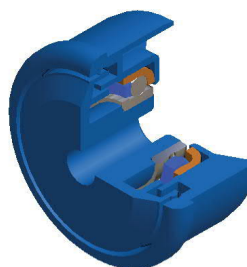
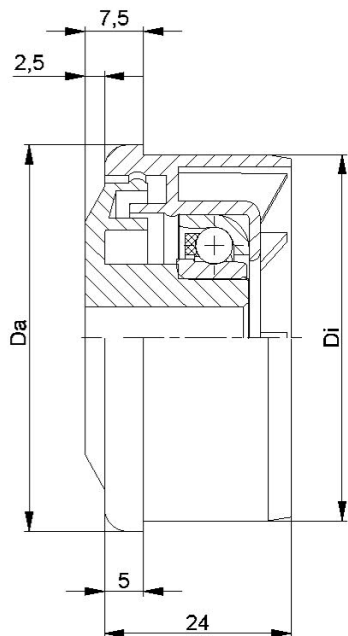
Oil



Carton [pcs.]

ø50: 250
ø60: 200

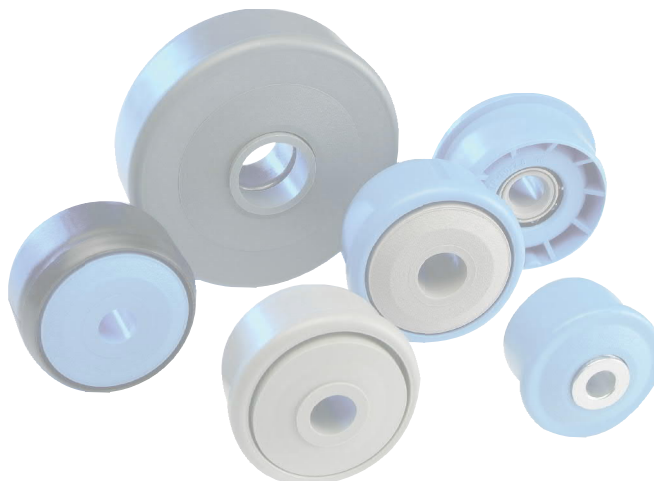
KTR



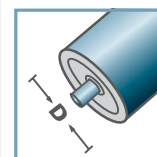
KTR-31			
Type	Di +0,2	Da	Load Rating C [daN]
KTR-50x1,5.31	47,3	49,9	25
KTR-50x2,8.31	44,6	49,9	25
KTR-60x1,5.31	57,3	59,9	25
Other dimensions on request!			

- ☛ Housing: Plastic
- ☛ Single Labyrinth Seal: Plastic
- ☛ Bearing RL-31
 - ☛ Bearing Shell: 1.4301
 - ☛ Inner Race: 1.4305
 - ☛ Ball Cage: Plastic
 - ☛ Ball: 1.4301

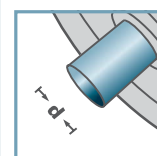
Please note: the single labyrinth seal for axis 15 mm is delivered separately and has to be locked at assembly.



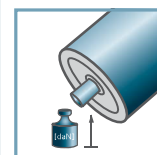
KTR-31



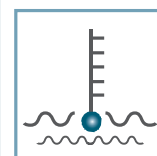
D [mm]
50 - 60



d [mm]
10; 12; 15; SW11



C [daN]
25



T [°C]
0° - 80°



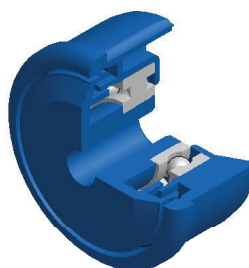
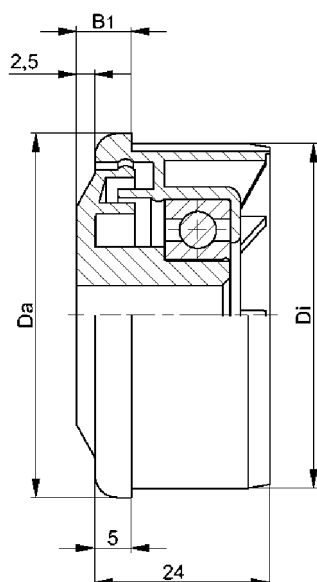
Oil



Carton [pcs.]

ø50: 250
ø60: 200

KTR



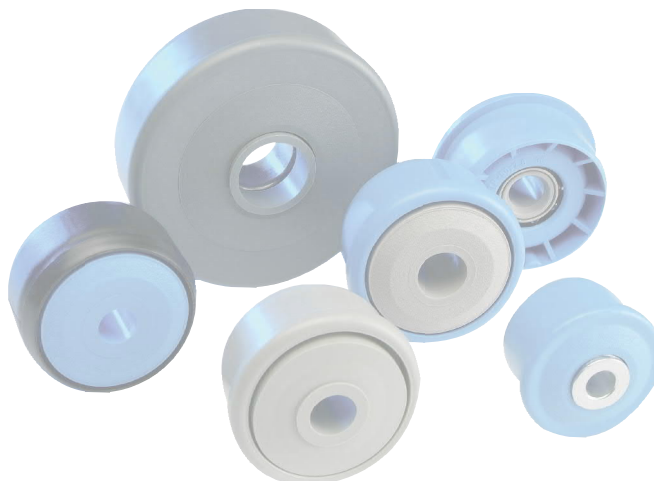
KTR-40				
Type	Di +0,25	Da	B1	Load Rating C [daN]
KTR-50x1,5.40	47,3	49,9	7,5	80
KTR-50x2,0.40	46,3	49,9	7,5	80
KTR-50x2,8.40	44,6	49,9	7,5	80
KTR-60x1,5.40	57,3	59,9	7,5	80
KTR-60x2,0.40	56,3	59,9	7,5	80
Other dimensions on request!				

• Housing: Plastic

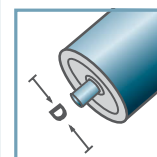
• Single Labyrinth Seal: Plastic

• Bearing 6002

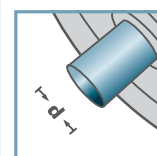
Please note: the single labyrinth seal for axis 15 mm is delivered separately and has to be locked at assembly.



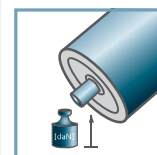
KTR-40



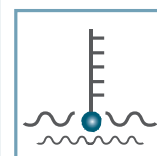
D [mm]
50 - 60



d [mm]
10; 12; 15; SW11



C [daN]
80



T [°C]
0° - 80°



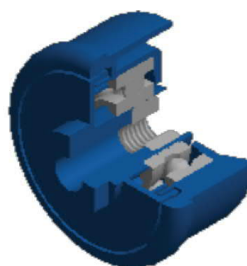
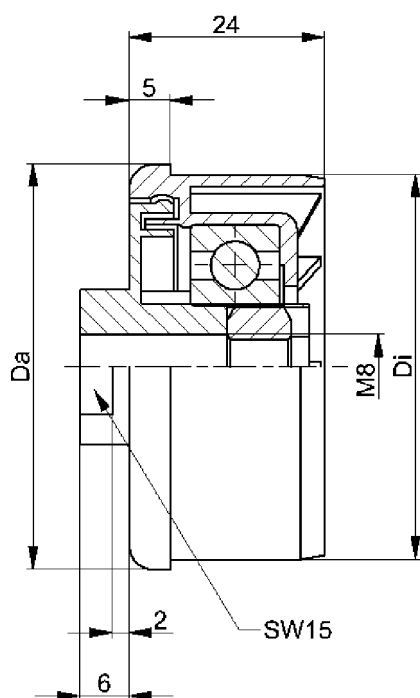
EP 2



Carton [pcs.]

ø40: -
ø50: 250
ø60: 200

KTR

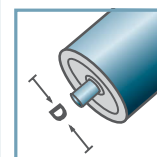
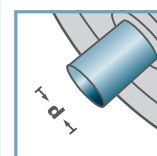
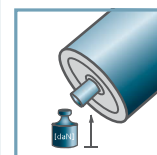
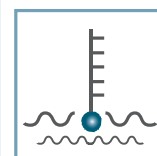


KTR-40.M8			
Type	Di +0,2	Da	Load Rating C [daN]
KTR-50x1,5.40	47,3	49,9	80
Other dimensions on request!			

- Housing: Plastic
- Single Labyrinth Seal: Plastic
- Bearing 6202
- Hexagon Nut



KTR-40.M8

D [mm]
50d [mm]
M8C [daN]
80T [°C]
0° - 80°

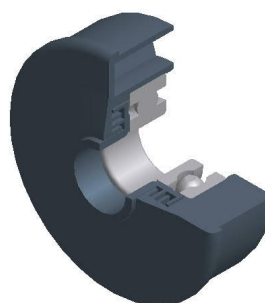
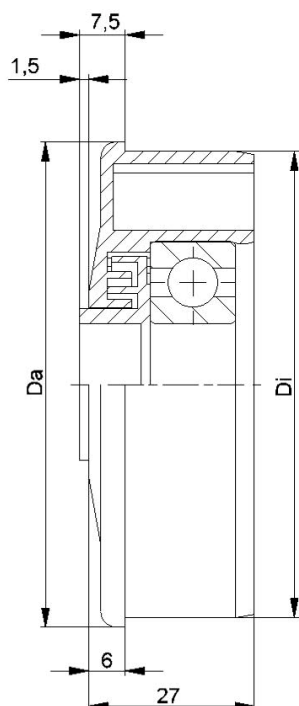
EP 2



Carton [pcs.]

ø50: 250

KTR

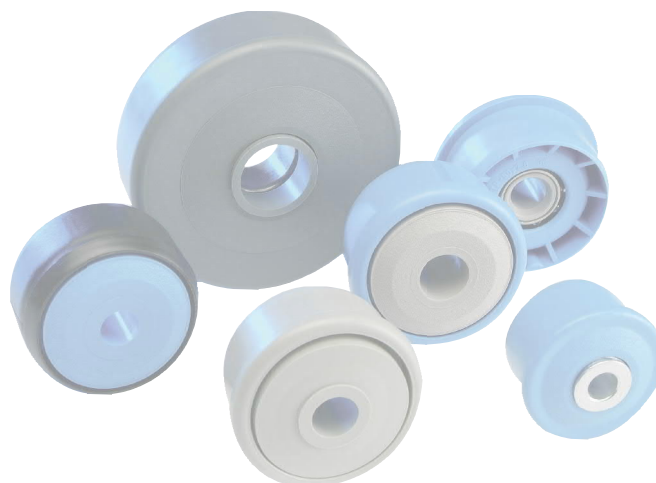


KTR-43/44

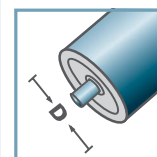
Type	Di +0,2	Da	Load Rating C [daN]
KTR-63,5x2,9.43/.44	58,0	63,4	150
KTR-80x2,0.43/.44	76,4	79,9	150

Other dimensions on request!

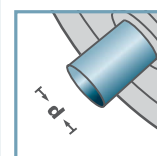
- Housing: Plastic
- Multiple Labyrinth Seal: Plastic
- Bearing 6303/6204



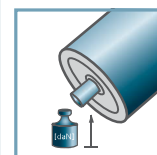
KTR-43/44



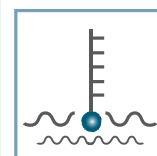
D [mm]
63,5 - 80



d [mm]
6303: 17
6204: 20



C [daN]
150



T [°C]
0° - 80°



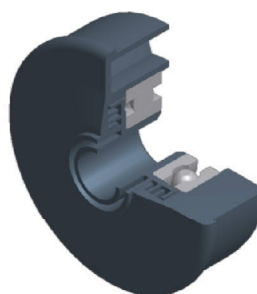
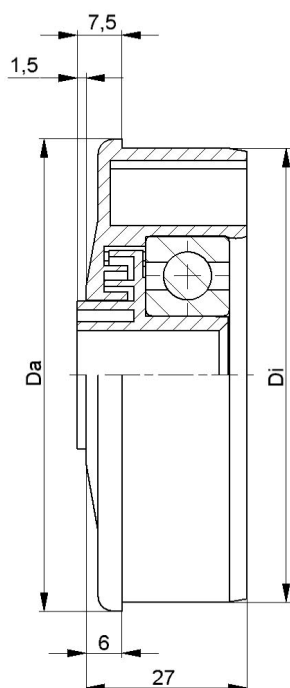
EP 2



Carton [pcs.]

100

KTR

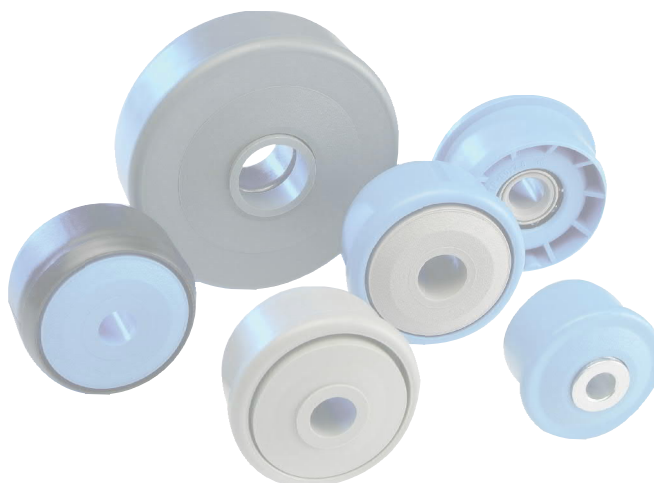


KTR-43/44

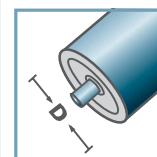
Type	Di +0,2	Da	Load Rating C [daN]
KTR-63,5x2,9.43/.44	58,0	63,4	150
KTR-80x2,0.43/.44	76,4	79,9	150

Other dimensions on request!

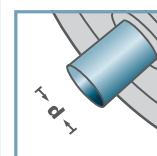
- Housing: Plastic
- Multiple Labyrinth Seal: Plastic
- Bearing 6303/6204



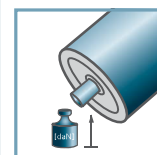
KTR-43/44



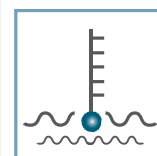
D [mm]
63,5 - 80



d [mm]
6303: 12
6204: 15



C [daN]
150



T [°C]
0° - 80°



EP 2

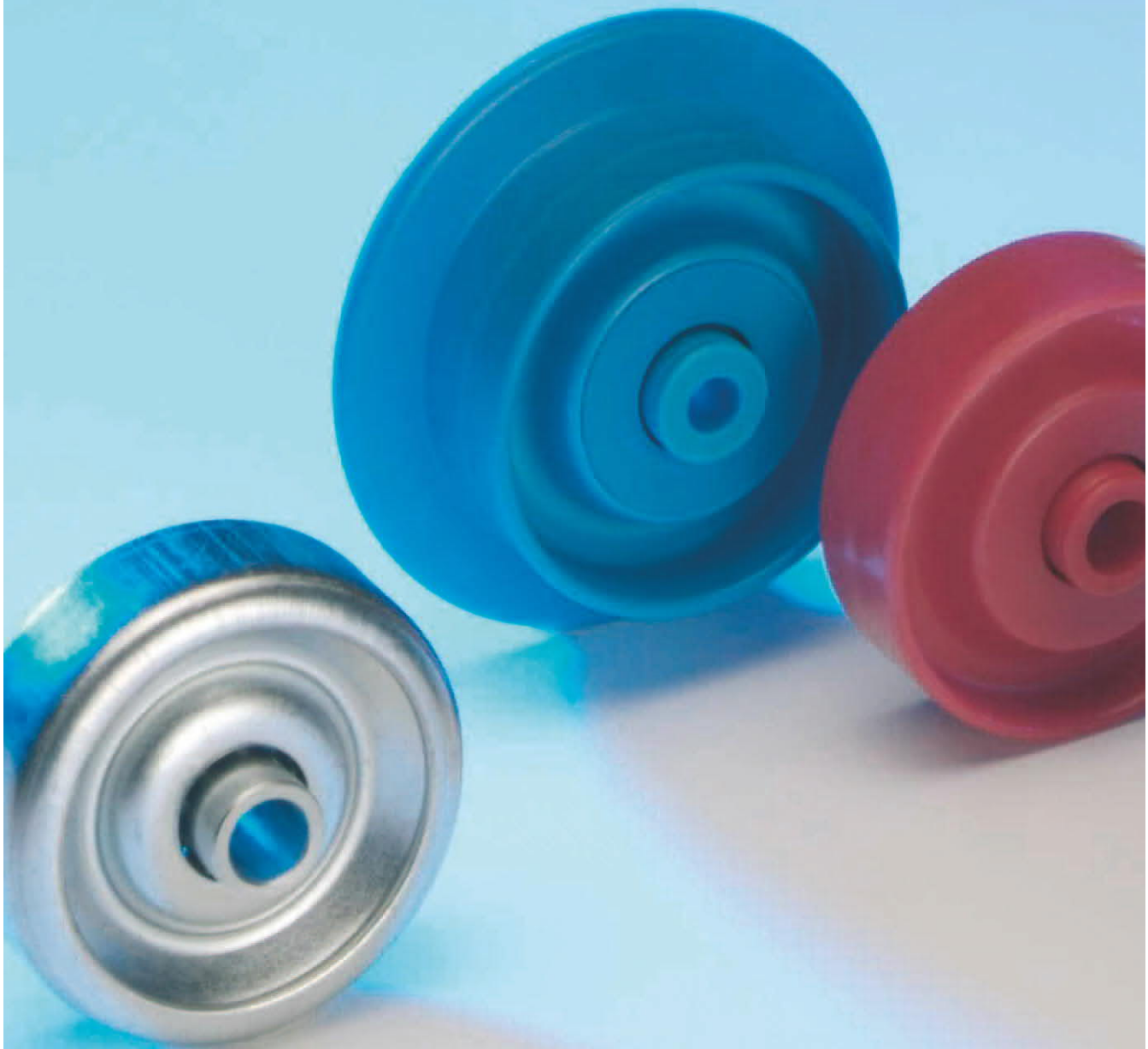


Carton [pcs.]

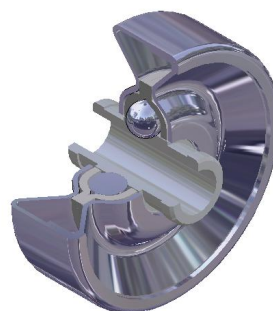
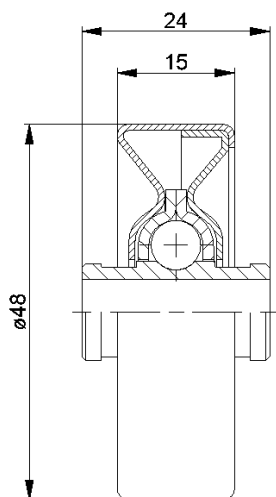
100

KTR

Skate Wheels KLR/SLR/SR



KLR/SLR/SR

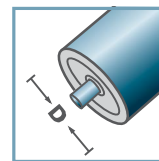


SLR	
Type	Load Rating C [daN]
SLR-480	20
Other dimensions on request!	

Skate Wheel: Steel

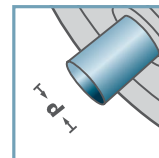


SLR-



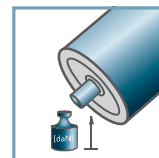
D [mm]

-



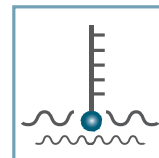
d [mm]

6; 8



C [daN]

20



T [°C]

-30° - 140°



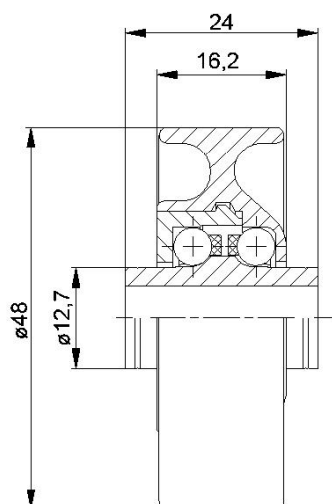
-



Carton [pcs.]

250

KLR/SLR/SR

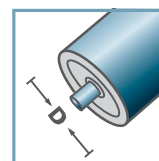


KLR-02/03			
Type	Normal .02	Stainless .03	Load Rating C [daN]
KLR-480	x	x	15
Other dimensions on request!			

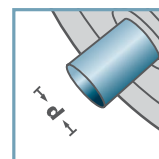
- ☛ Housing: Plastic
- ☛ Inner Race: Plastic
- ☛ Bearing Cap: Plastic
- ☛ Ball Cage: Plastic
- ☛ Ball
 - ☛ 02: Steel
 - ☛ 03: 1.4034



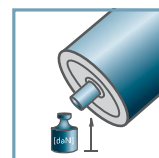
KLR-02
KLR-03



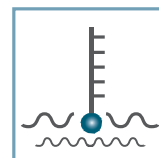
D [mm]
-



d [mm]
6; 8



C [daN]
15



T [°C]
0° - 80°



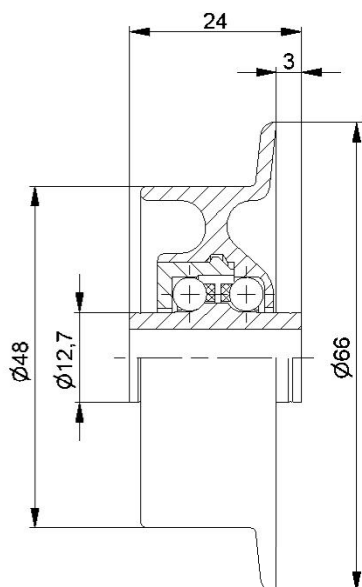
-



Carton [pcs.]

250

KLR/SLR/SR

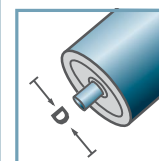


SR-02/03			
Type	Normal .02	Stainless .03	Load Rating C [daN]
SR-480	x	x	10
Other dimensions on request!			

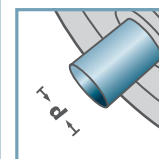
- ☛ Housing: Plastic
- ☛ Inner Race: Plastic
- ☛ Bearing Cap: Plastic
- ☛ Ball Cage: Plastic
- ☛ Ball
 - ☛ 02: Steel
 - ☛ 03: 1.4034



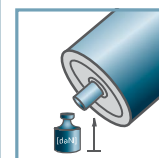
SR-02
SR-03



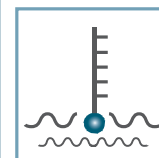
D [mm]
-



d [mm]
6; 8



C [daN]
15



T [°C]
0° - 80°



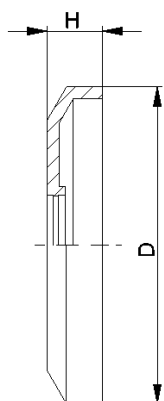
-



Carton [pcs.]

250

KLR/SLR/SR

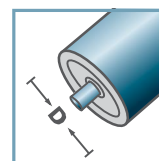


DK-KLR		
Type	D	H
DK-KLR-02	40,5	7
Other dimensions on request!		

Seal Bonnet: Plastic

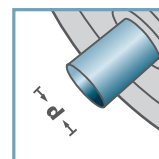


DK-KLR-02



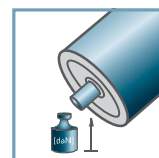
D [mm]

-



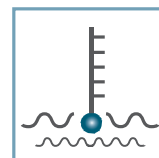
d [mm]

-



C [daN]

-



T [°C]

0° - 80°



-



Carton [pcs.]

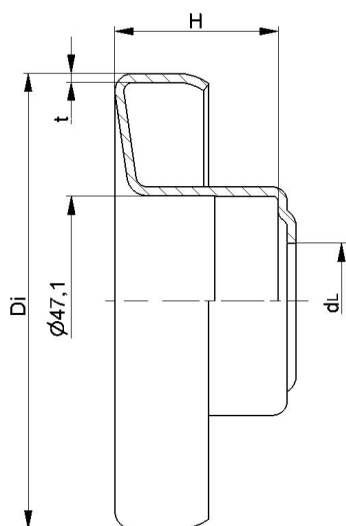
-

KLR/SLR/SR

Retainer for standard bearings LH/KLH/FL



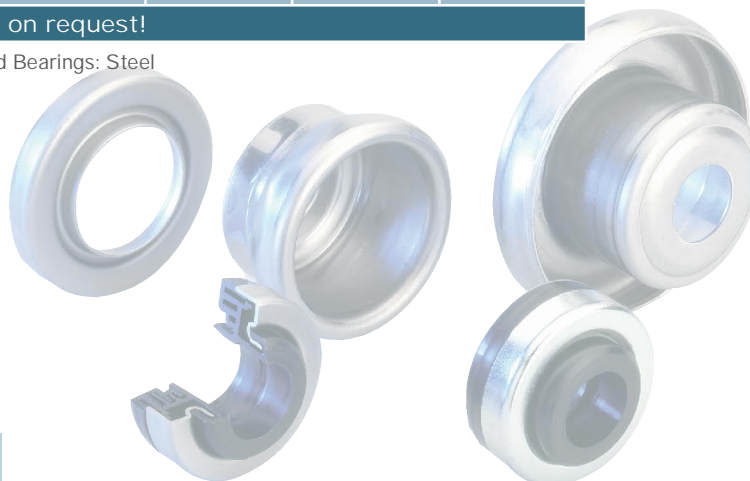
LH/KLH/FL



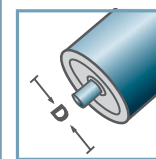
LH /6204				
Type	Di	H	dL	t
LH-63,5x1,75/6204	60,5	33	26	1,5
LH-63,5x2,9/6204	58,2	33	26	1,5
LH-80x2,0/6204	76,5	36,5	26	2,0
LH-80x3,0/6204	74,5	36,5	26	2,0
LH-89x3,0/6204	83,5	36,5	26	2,0
LH-108x2,5/6204	103,3	36,5	26	2,0
LH-108x2,9/6204	102,8	36,5	26	2,0
LH-108x3,25/6204	102,1	36,5	26	2,0
LH-133x3,6/6204	126,3	36,5	26	2,5

Other dimensions on request!

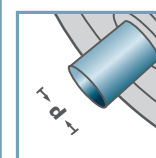
Retainer for Standard Bearings: Steel



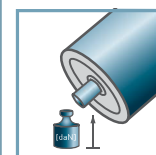
LH /6204



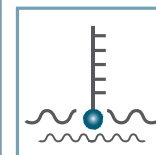
D [mm]
63,5 - 133



d [mm]
20



C [daN]
-



T [°C]
-

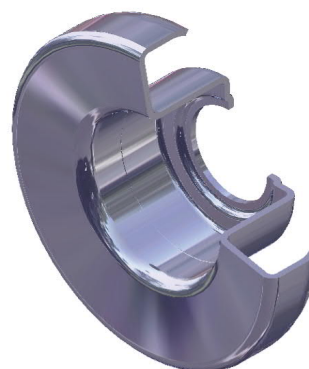
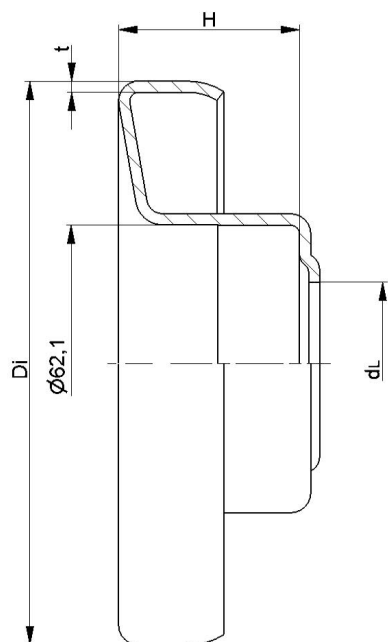


6204:
D47, d20, H14



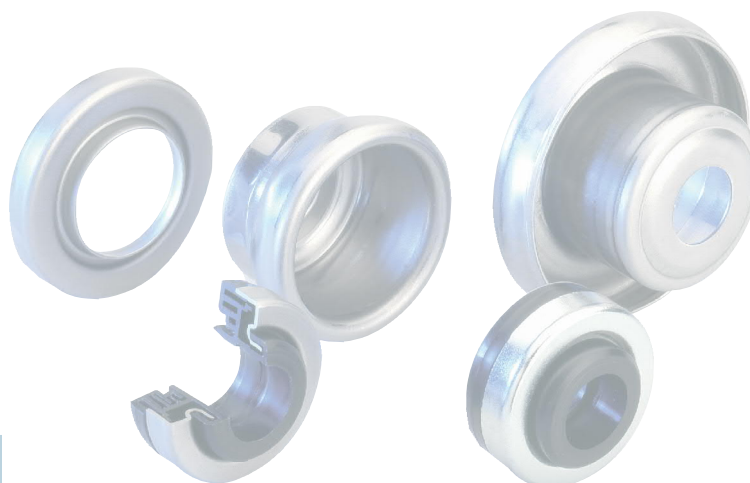
Skeleton
Container [pcs.]
ø63,5: 6000
ø80: 3500
ø89: 3100
ø108: 2000
ø133: 1150

LH/FL

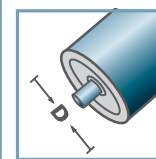


LH /6305				
Type	Di	H	dL	t
LH-89x3,0/6305	83,5	40,5	36,5	2,0
LH-108x2,5/6305	103,3	40,5	36,5	2,0
LH-108x3,25/6305	102,1	40,5	36,5	2,0
LH-127x2,9/6305	121,7	40,5	36,5	2,5
LH-133x3,6/6305	126,3	40,5	36,5	2,5
LH-159x4,5/6305	150,5	40,5	36,5	2,5
Other dimensions on request!				

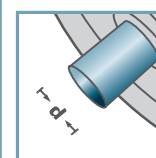
Retainer for Standard Bearings: Steel



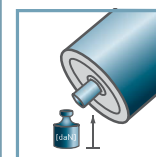
LH /6305



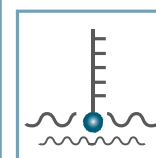
D [mm]
89 - 159



d [mm]
25



C [daN]
-



T [°C]
-

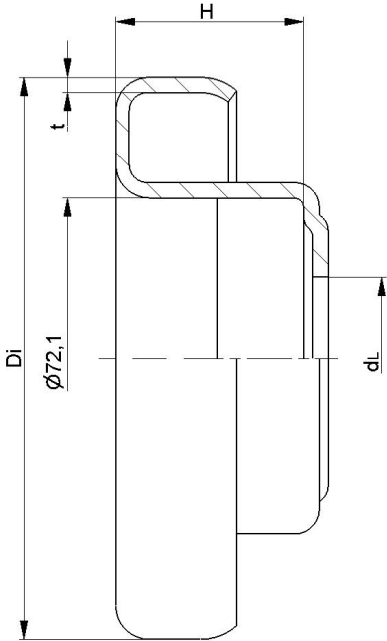


6305:
D62, d25, H17



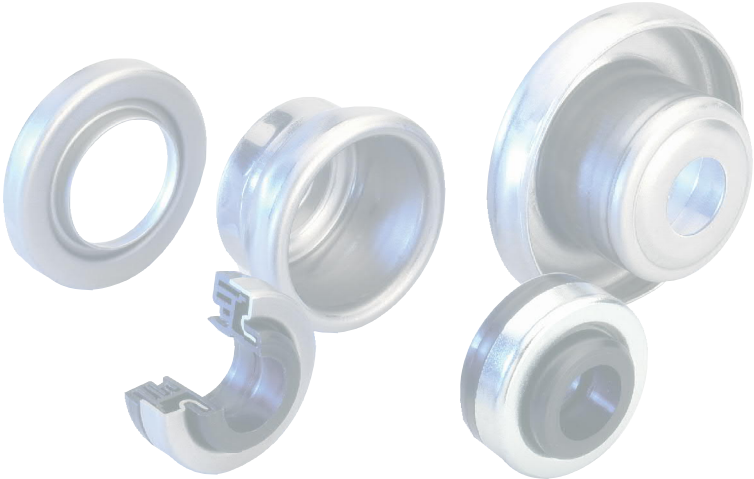
Skeleton
Container [pcs.]
ø89: 2600
ø108: 1900
ø133: 1150

LH/FL

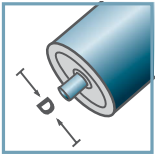


LH /6306				
Type	Di	H	dL	t
LH-108x3,25/6306	102,1	42	36,5	3,0
LH-133x3,6/6306	126,3	42	36,5	3,5
LH-159x4,5/6306	150,5	42	36,5	2,5
Other dimensions on request!				

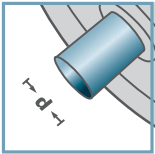
Retainer for Standard Bearings: Steel



LH /6306



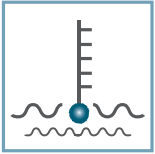
D [mm]
108 - 159



d [mm]
30



C [daN]
-



T [°C]
-

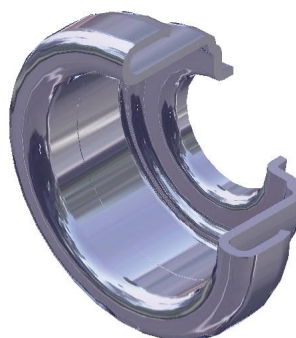
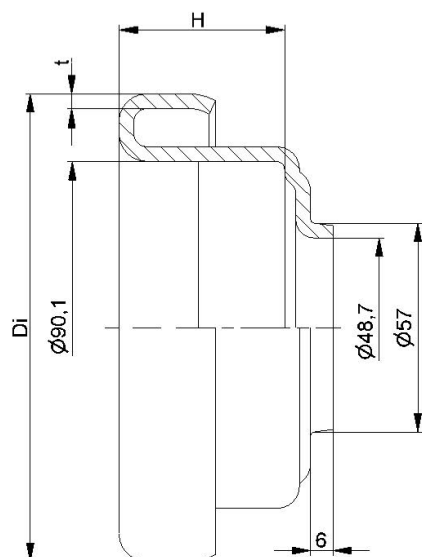


6306:
D72, d30, H19



Skeleton
Container [pcs.]
Ø108: 1700
Ø133: 1000

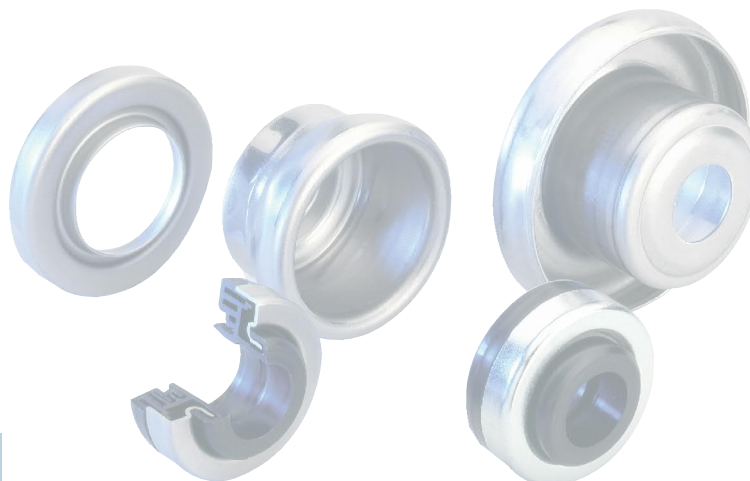
LH/FL



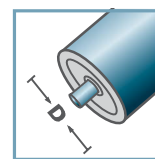
LH /6308			
Type	Di	H	t
LH-133x3,6/6308	126,3	44,6	4,0
LH-159x4,5/6308	150,8	44,6	4,0

Other dimensions on request!

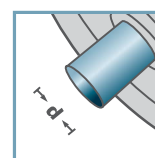
 Retainer for Standard Bearings: Steel



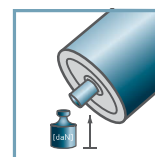
LH /6308



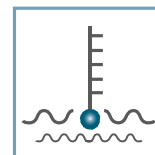
D [mm]
133 - 159



d [mm]
40



C [daN]
-



T [°C]
-

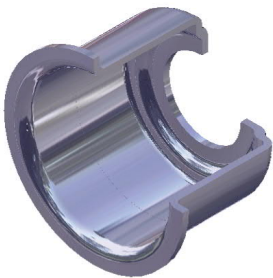
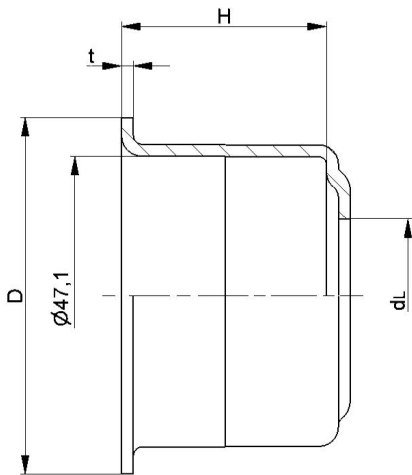


6308:
D90, d40, H23



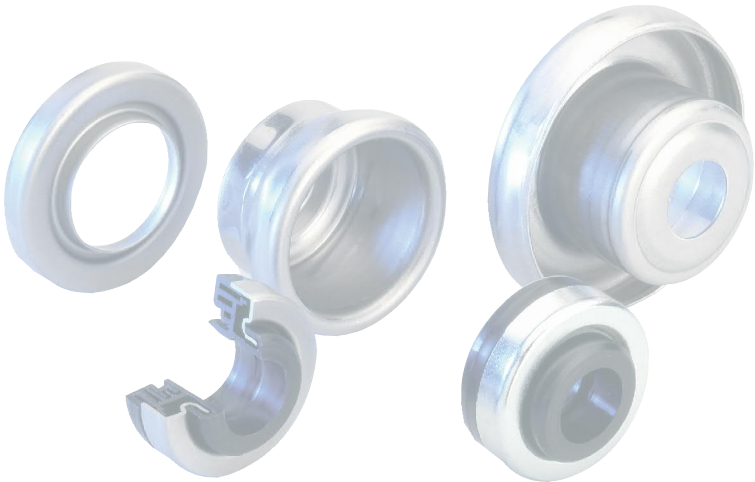
Skeleton
Container [pcs.]
Ø133: 800
Ø159: 600

LH/FL

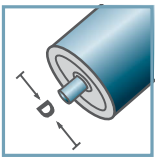


FL /6204				
Type	D	H	dL	t
FL-60x3,0/6204	58,1	34	26	2,0
FL-63,5x2,9/6204	60,0	34,5	26	2,0
FL-76/6204	73,5	34,5	26	2,0
Other dimensions on request!				

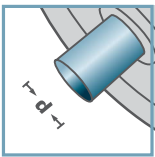
Retainer for Standard Bearings: Steel



FL /6204



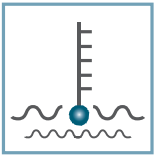
D [mm]
60 - 76



d [mm]
20



C [daN]
-



T [°C]
-

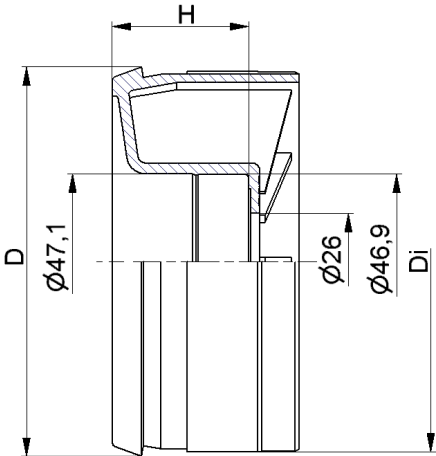


6204:
D47, d20, H14



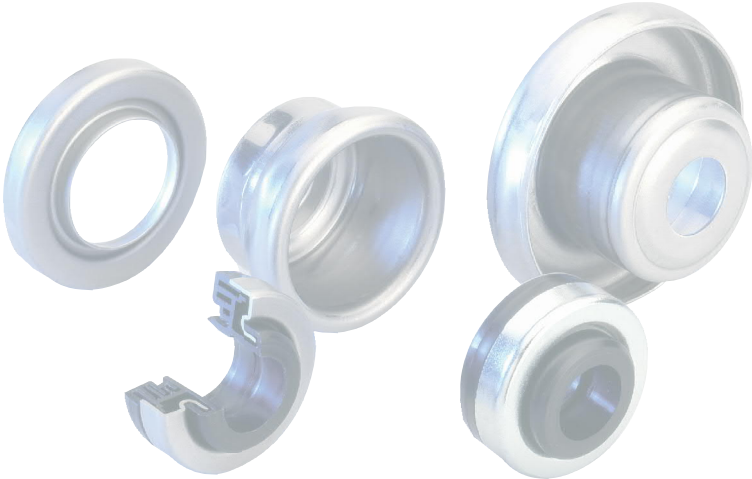
Skeleton
Container [pcs.]
ø60: 4000
ø63,5: 4000
ø70: 2000
ø76: 2000

LH/FL

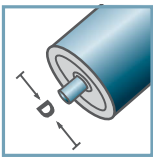


KLH /6204			
Type	Di	H	D
KLH-89x3,0/6204	83,2	36,5	85,3
KLH-108x3,0/6204	102,2	36,5	104,3
Other dimensions on request!			

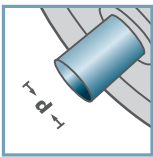
Retainer for Standard Bearings: Plastic



KLH /6204



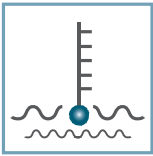
D [mm]
89 - 108



d [mm]
20



C [daN]
-



T [°C]
100°

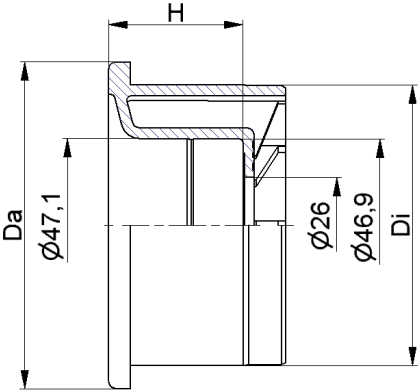


6204:
D47, d20, H14



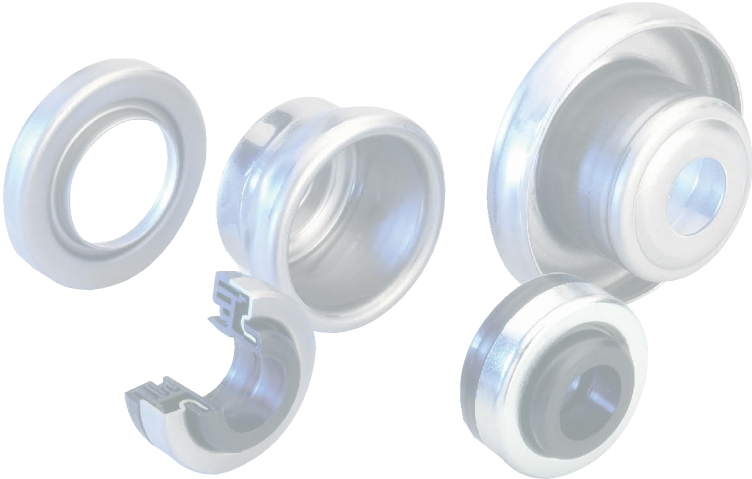
Skeleton
Container [pcs.]
1000

LH/FL

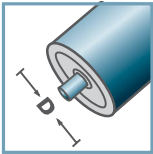


KLH /6204			
Type	Da	Di	H
KLH-90x7,0/6204	88,8	76,3	36,5
Other dimensions on request!			

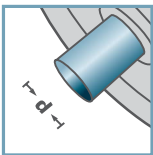
Retainer for Standard Bearings: Plastic



KLH /6204



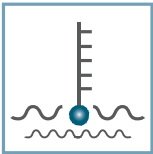
D [mm]
90



d [mm]
20



C [daN]
-



T [°C]
100°

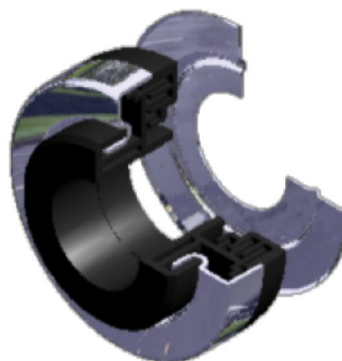
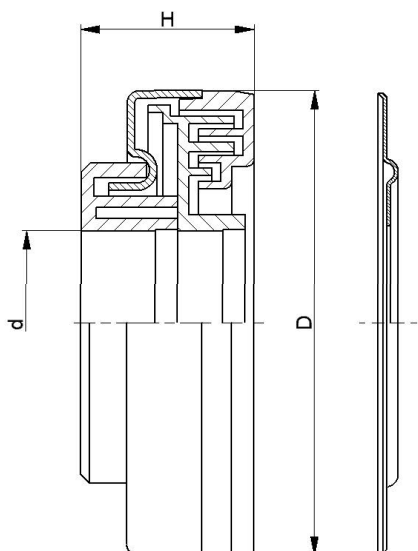


6204:
D47, d20, H14



Skeleton
Container [pcs.]
1000

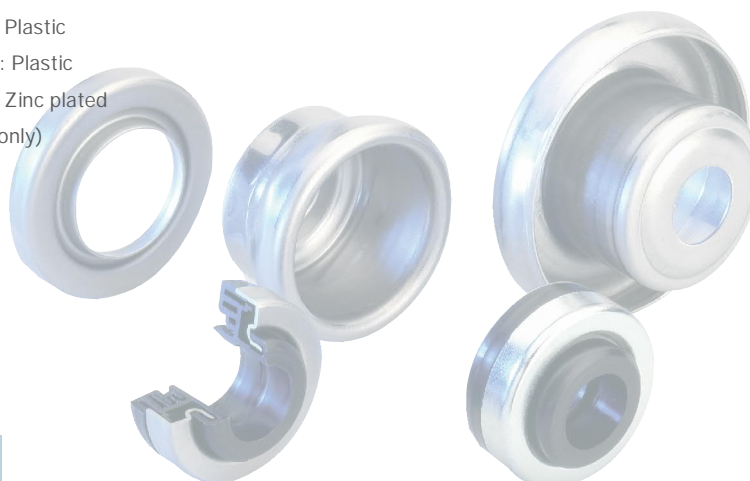
LH/FL



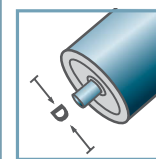
Labyrinth LH-			
Type	D	H	d
LH-6303	47	22,5	17
LH-6204	47	22,5	20
LH-6305	62	23,5	25
LH-6206	62	23,5	30
LH-6306	72	24,5	30
LH-6308	90	23,1	40

Other dimensions on request!

- Seal Bonnet: Steel, Zinc plated
- Rain Cap: Plastic
- Inner Labyrinth Seal: Plastic
- Outer Labyrinth Seal: Plastic
- Sheet Gasket: Steel, Zinc plated
(available with 6204 only)

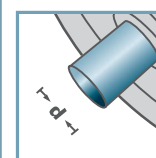


Labyrinth
LH-

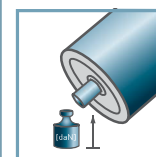


D [mm]

-

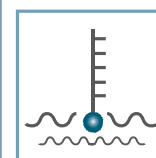


d [mm]
17 - 40



C [daN]

-



T [°C]
0° - 80°



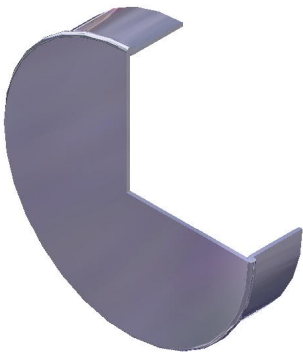
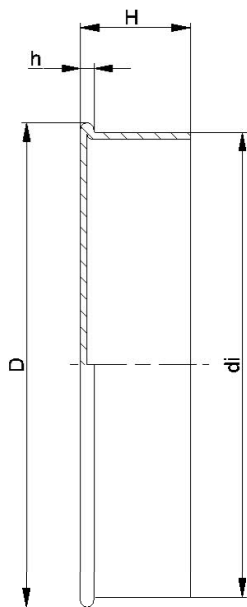
-



Carton [pcs.]

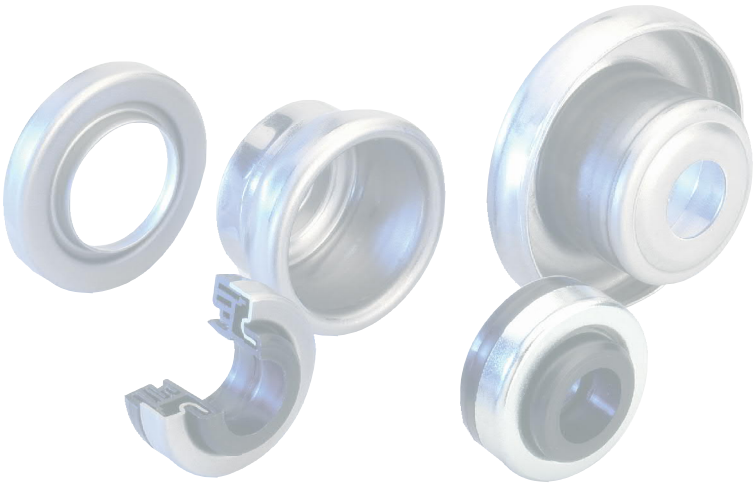
6204: 500
6305: 500

LH/FL

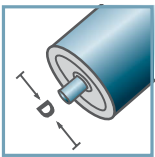


LH- closed				
Type	D	di	H	h
LH-6204	50	47,4	14,7	1,8
Other dimensions on request!				

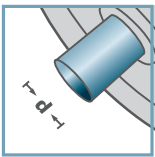
Seal Bonnet: Steel



LH-



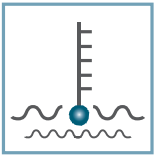
D [mm]
-



d [mm]
-



C [daN]
-



T [°C]
-



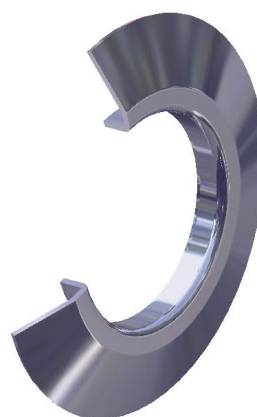
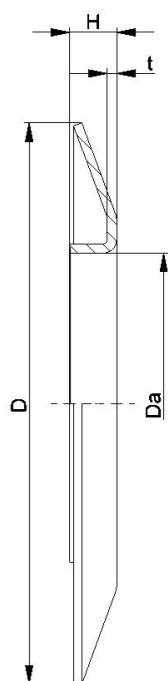
-



Carton [pcs.]

ST-6204	125
ST-6305	100
ST-6306	100

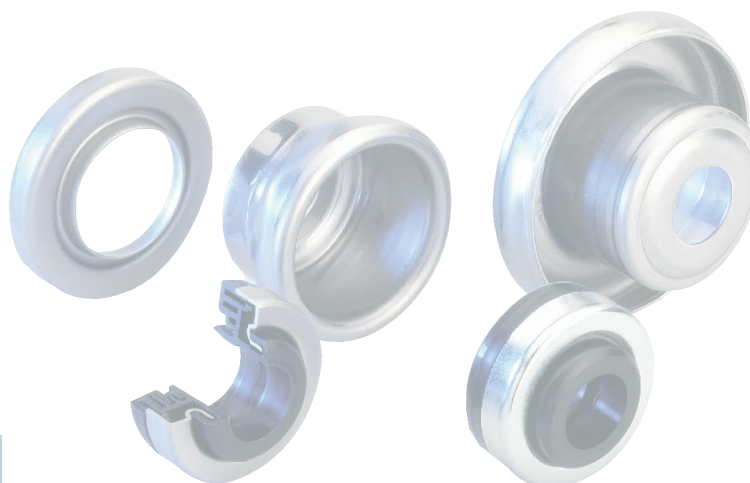
LH/FL



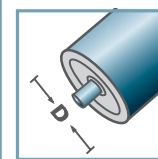
BS-				
Type	Da ± 0.1	D -2	H ± 0.5	t
BS-50-130	49,9	130	10	1,5
BS-60-130	59,9	130	10	1,5
BS-80-150	79,9	150	14	2,5
BS-89-150	88,9	150	14	2,5
BS-108-150	107,9	150	14	2,5

Other dimensions on request!

Wheel Flange: Steel

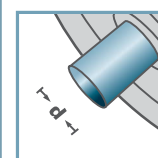


BS-



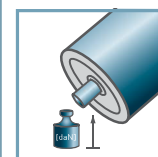
D [mm]

-



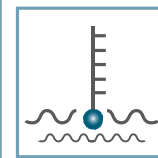
d [mm]

-



C [daN]

-



T [°C]

-



-



Carton [pcs.]

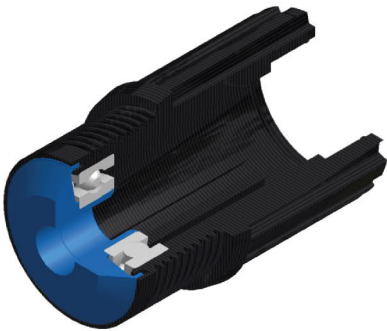
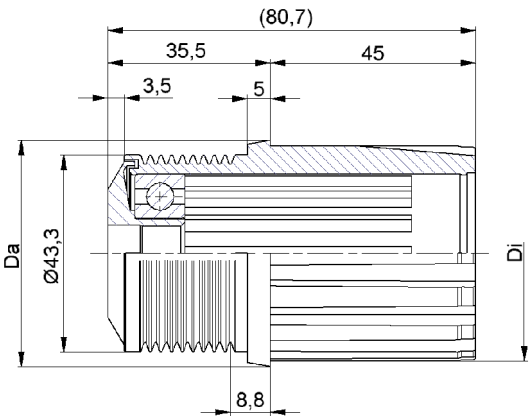
25

LH/FL

Sprockets

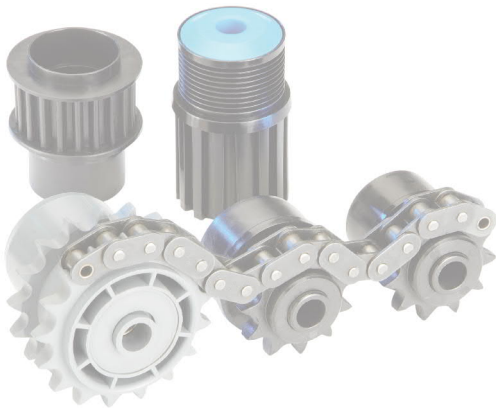


SPROCKETS

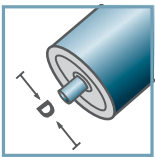


V-Beltdrive PJ VR-			
Type	Di	Da	Load Rating C [daN]
50x1,5.40	47,3	49,8	80

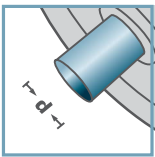
- ⚙ Housing: Plastic
- ⚙ Single Labyrinth Seal: Plastic
- ⚙ Bearing 6202
also with two bearings available



VR-40



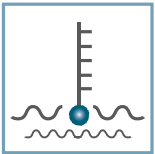
D [mm]
50



d [mm]
12



C [daN]
80



T [°C]
0° - 80°



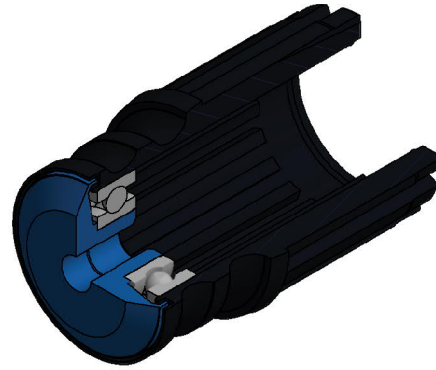
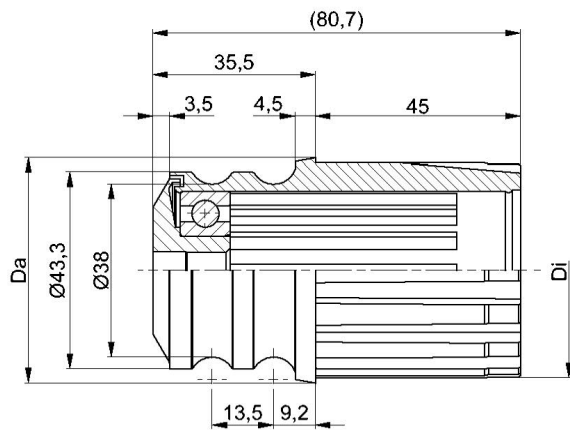
EP 2



Carton [pcs.]

100

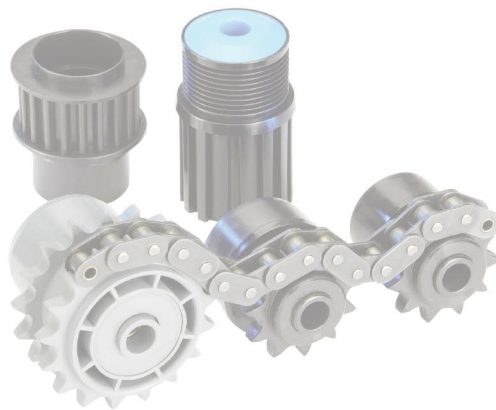
Plastic VR-Belt Drive



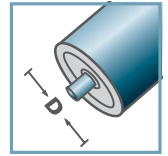
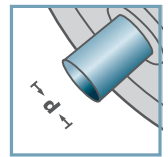
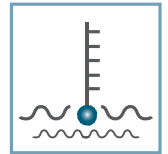
Round Beltdrive RR-

Type	Di	Da	Load Rating C [daN]
50x1,5.40	47,3	49,8	80

- Housing: Plastic
- Single Labyrinth Seal: Plastic
- Bearing 6202
also with two bearings available



RR-40

D [mm]
50d [mm]
12C [daN]
80T [°C]
0° - 80°

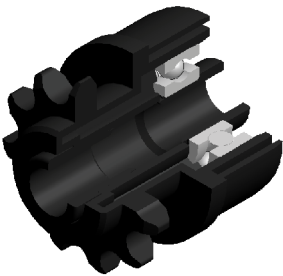
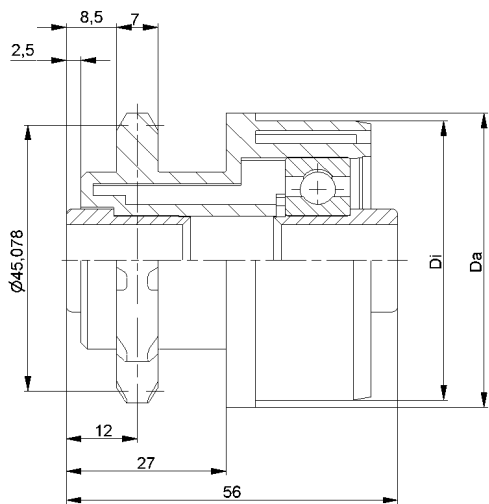
EP 2



Carton [pcs.]

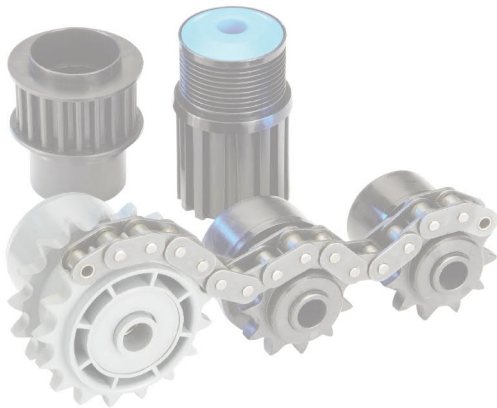
100

Plastic Belt Drive

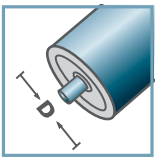


KKR-1/2"x5/16"-Z11 for fix driving		
Type	Di +0,2	Da
50x1,5.40	47,3	49,9
50x2,8.40	44,6	49,9
Other dimensions on request!		

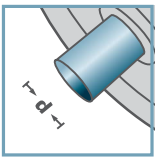
- ⚙ Housing: Plastic
- ⚙ Reducing Bush: Plastic
- ⚙ Bearing 6202



KKR-40



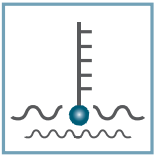
D [mm]
50



d [mm]
12



C [daN]
-



T [°C]
0° - 80°



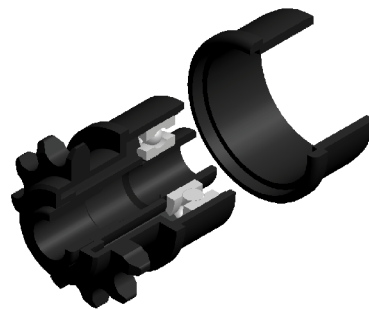
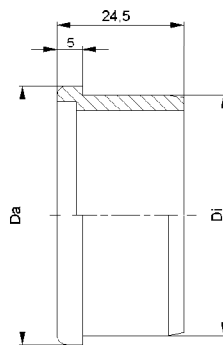
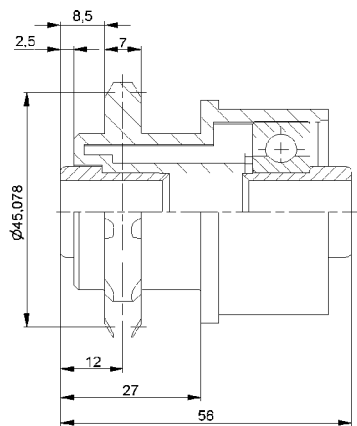
EP 2



Carton [pcs.]

150

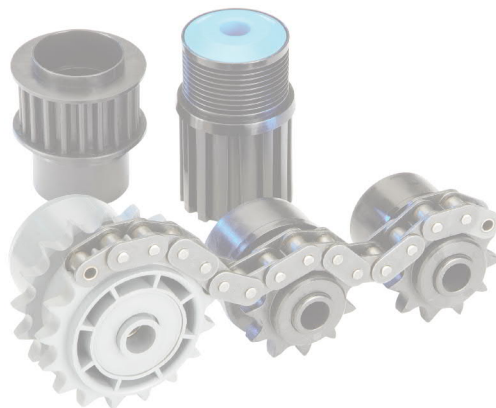
Plastic Sprocket Wheel


KKR-1/2"x5/16"-Z11 for friction driving

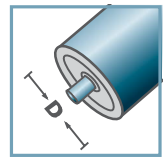
Type	Di +0,2	Da
50x1,5.40 ST	47,3	49,9
50x2,8.40 ST	44,6	49,9

Other dimensions on request!

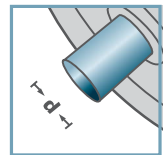
- 🔧 Housing: Plastic
- 🔧 Reducing Bush: Plastic
- 🔧 Sliding Ring: Plastic
- 🔧 Bearing 6202



KKR-40



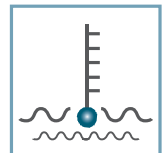
D [mm]
50



d [mm]
12



C [daN]
-



T [°C]
0° - 80°



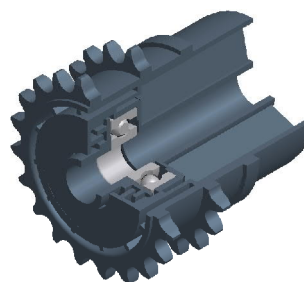
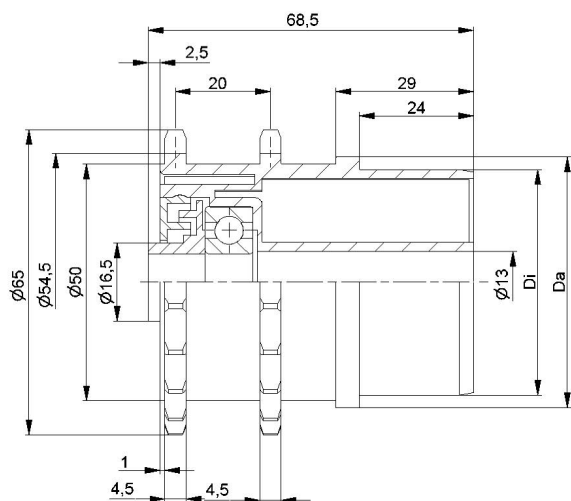
EP 2



Carton [pcs.]

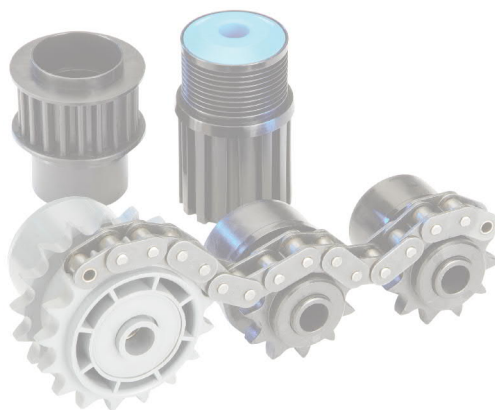
Housing:
150
Sliding Ring:
300

Plastic Sprocket Wheel

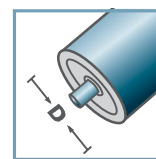
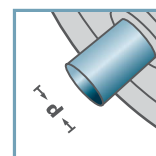


KKR-3/8"x3/16"-Z20		
Type	Di +0,2	Da
53x3,0.41	47,6	52,9
Other dimensions on request!		

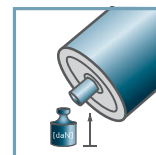
- Housing: Plastic
- Inner Labyrinth Seal: Plastic
- Outer Labyrinth Seal: Plastic
- Bearing 6201



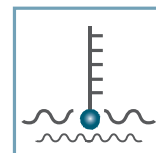
KKR-41

D [mm]
53

d [mm]
12



C [daN]



T [°C]
0° - 80°



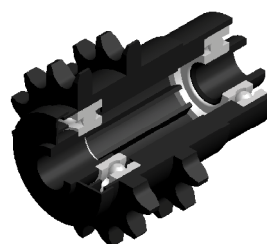
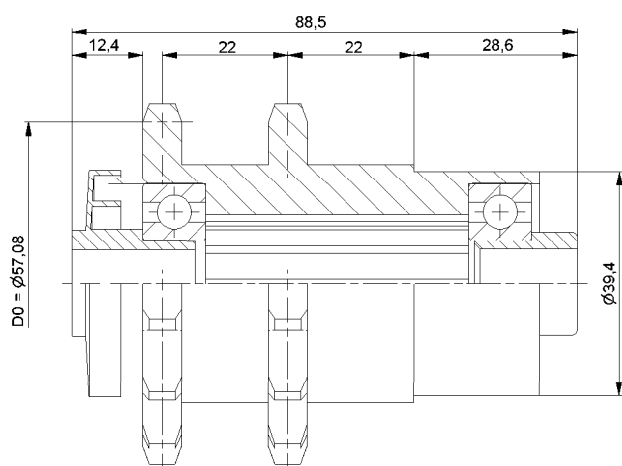
EP 2



Carton [pcs.]

60

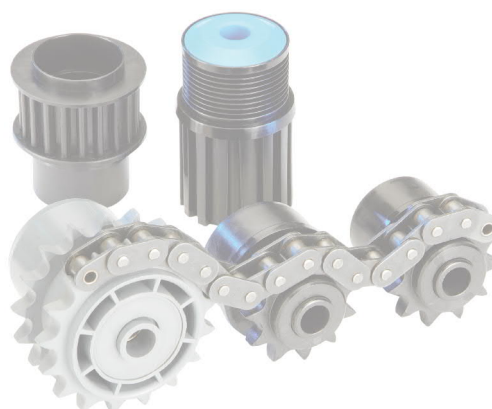
Plastic Sprocket Wheel



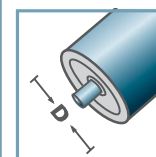
KKR-1/2"x5/16"-Z14

Other dimensions on request!

- ⚙ Housing: Plastic
- ⚙ Labyrinth Seal: Plastic
- ⚙ Reducing Bush: Plastic
- ⚙ Bearing 6202

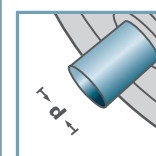


KKR-40



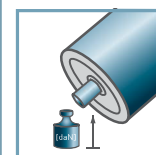
D [mm]

-



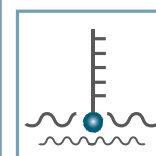
d [mm]

12



C [daN]

-



T [°C]

0° - 80°



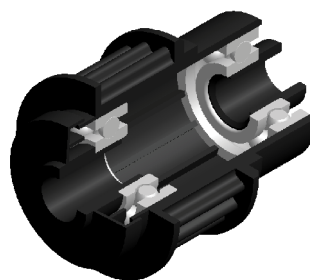
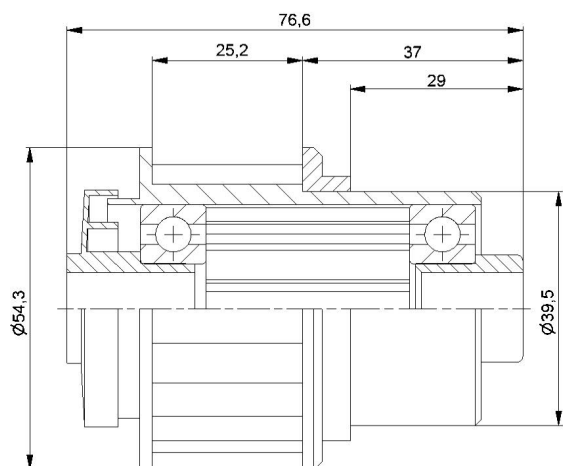
-



Carton [pcs.]

150

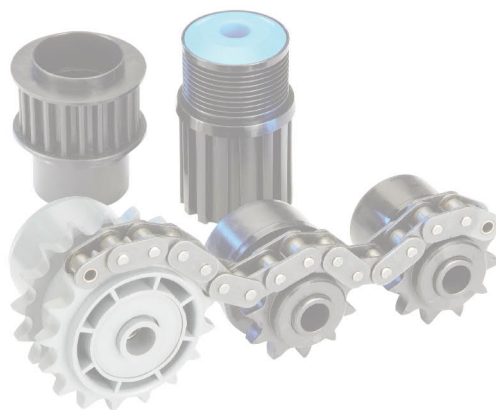
Plastic Sprocket Wheel



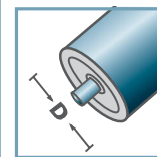
KZA-Z20.40

Other dimensions on request!

- ☛ Housing: Plastic
- ☛ Labyrinth Seal: Plastic
- ☛ Reducing Bush: Plastic
- ☛ Bearing 6202

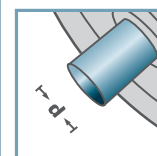


KZA-40



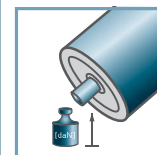
D [mm]

-



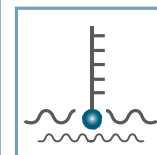
d [mm]

12



C [daN]

-



T [°C]

0° - 80°



-



Carton [pcs.]

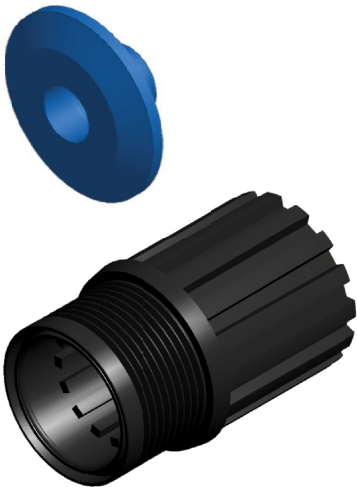
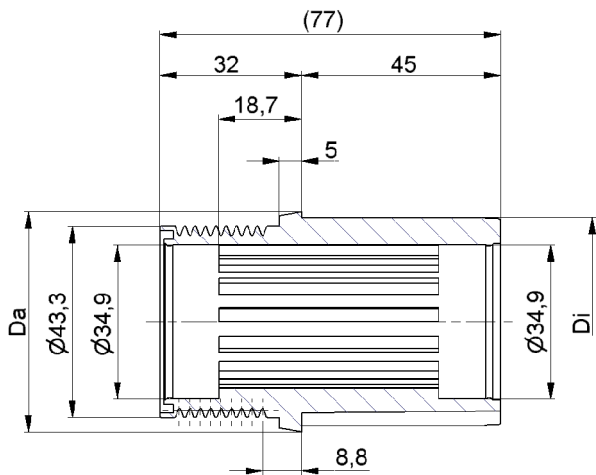
100

Plastic Synchronous Belt Drive

Components



COMPONENTS

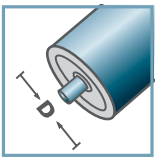


VR-		
Type	Di	Da
50x1,5.40	47,3	49,8

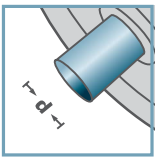
 Housing: Plastic



VR-40



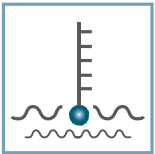
D [mm]
50



d [mm]
-



C [daN]
-



T [°C]
0° - 80°



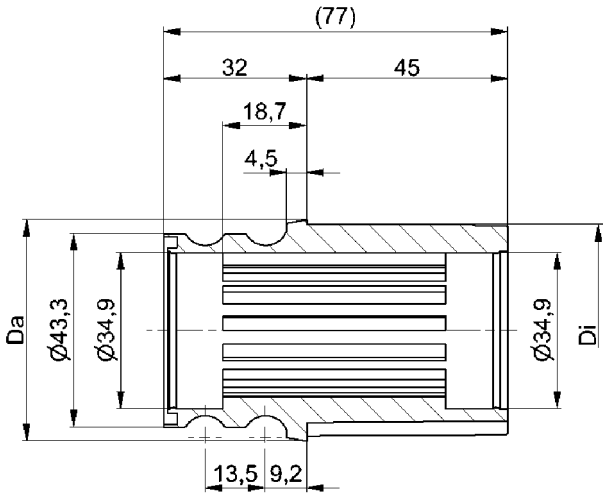
-




Carton [pcs.]

100

Plastic VR-Belt Drive Wheel

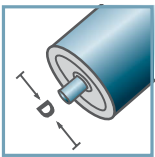


RR-		
Type	Di	Da
50x1,5.40	47,3	49,8

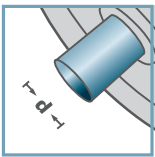
 Housing: Plastic



RR-40



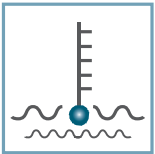
D [mm]
50



d [mm]
-



C [daN]
-



T [°C]
0° - 80°



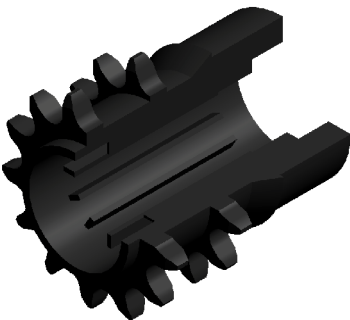
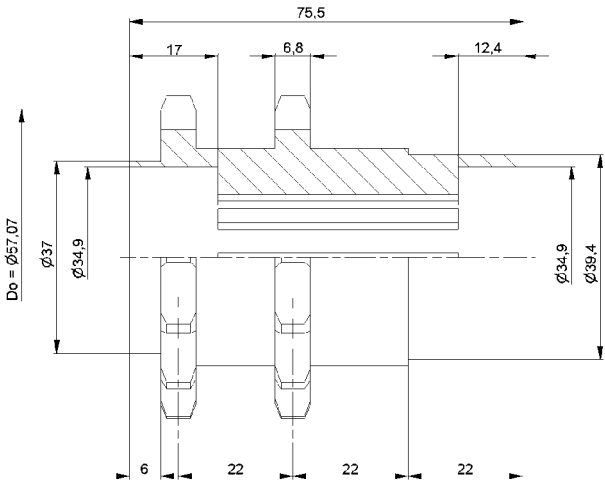
-



Carton [pcs.]

100

Plastic Belt Drive Wheel



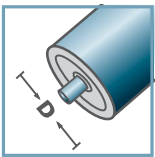
KKR-1/2"x5/16"-Z14

Other dimensions on request!

 Housing: Plastic

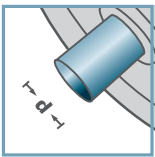


KKR-40



D [mm]

-



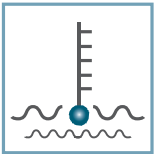
d [mm]

-



C [daN]

-



T [°C]

0° - 80°



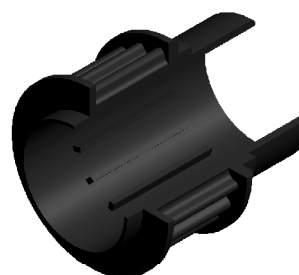
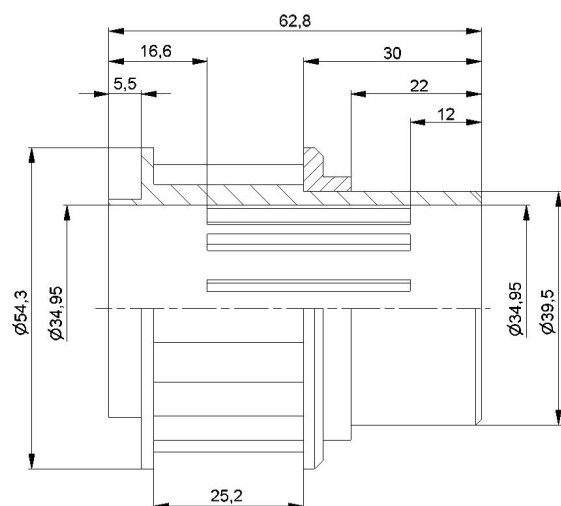
-



Carton [pcs.]


500

Plastic Sprocket Wheel

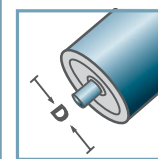


KZA-Z20.40

Other dimensions on request!

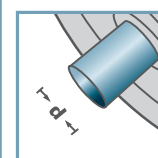
 Housing: Plastic


KZA-40



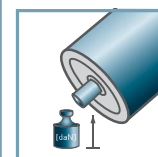
D [mm]

-



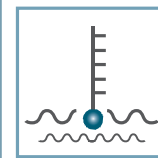
d [mm]

-



C [daN]

-



T [°C]

0° - 80°



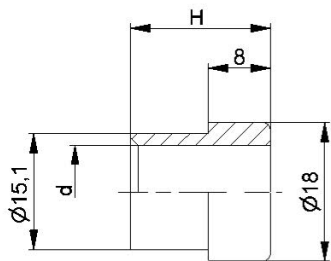
-



Carton [pcs.]

140

Plastic Synchronous Belt Drive

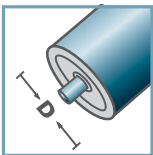


KKR-40		
	d	H
KKR-40	10	19
KKR-40	12	18
KKR-40	14	19
KKR-40	SW11	19
Other dimensions on request!		

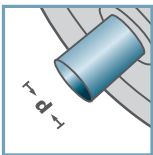
☛ Reducing Bush: Plastic



KKR-40



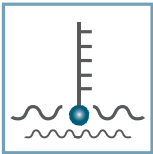
D [mm]
-



d [mm]
10; 12; 14; SW11



C [daN]
-



T [°C]
0° - 80°

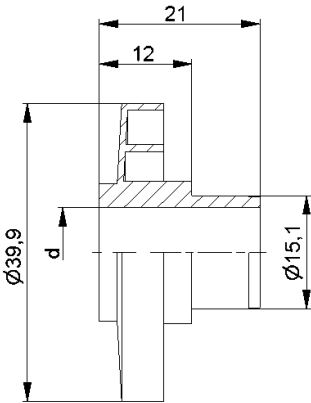


-



Carton [pcs.]
500/8000

Reducing Bush

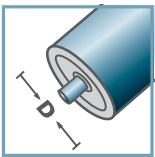


KKR-40	
Typ	d
KKR-40	10
KKR-40	12
KKR-40	14
KKR-40	SW11
Other dimensions on request!	

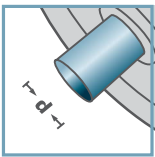
☛ Labyrinth Seal: Plastic



KKR-40



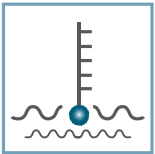
D [mm]
-



d [mm]
10; 12; 14; SW11



C [daN]
-



T [°C]
0° - 80°

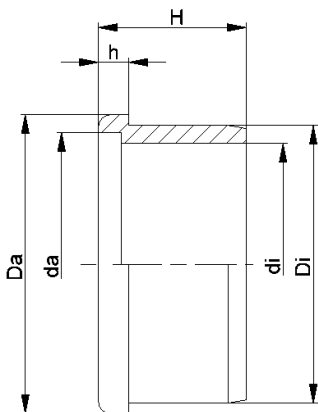


-



Carton [pcs.]
200/1000

Labyrinth Seal

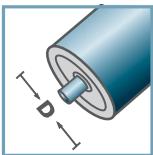


KKR-40						
Typ	Di	Da	di	da	H	h
50x1,5	47,25	50	39,3	42,6	25,2	5
50x2,8	44,7	50	39,3	42,6	25,2	5
60x1,5	57,3	60	47,0	50,7	25,5	5
60x2,0	56,3	60	47,0	50,7	25,5	5
Other dimensions on request!						

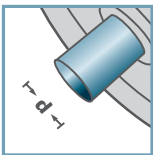
Distance Ring Fix: Plastic



KKR-40



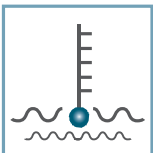
D [mm]
50 - 60



d [mm]
-



C [daN]
-



T [°C]
0° - 80°



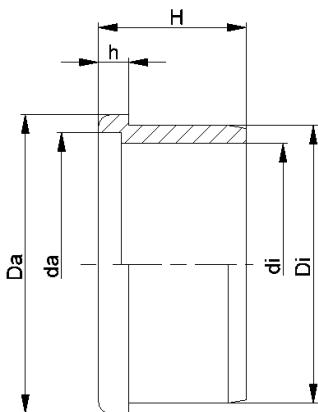
-



Carton [pcs.]

ø50: 400
ø60: 250

Distance Ring Fix

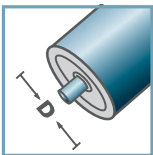


KKR-40						
Typ	Di	Da	di	da	H	h
50x1,5	47,2	50	40,6	44,6	25	5
50x2,8	44,6	50	40,6	44,6	25	5
Other dimensions on request!						

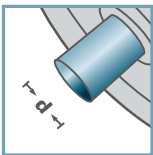
Distance Ring Friction: Plastic



KKR-40



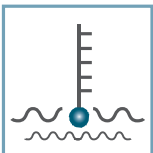
D [mm]
50 - 60



d [mm]
-



C [daN]
-



T [°C]
0° - 80°



-



Carton [pcs.]

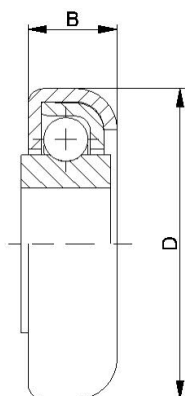
400

Distance Ring Friction

Special bearings

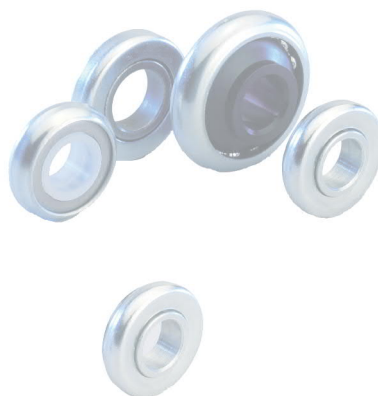


SPECIAL BEARINGS

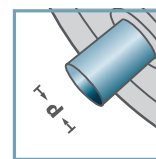


RL-0.280		
Type	D	B
RL-0.280	28,0	7,6
Other dimensions on request!		

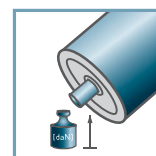
- ☛ Capsule: Steel, Zinc Plated
- ☛ Bearing Shell: Steel
- ☛ Ball: Steel
- ☛ Inner Race
 - ☛ Steel: C=10daN
 - ☛ Plastic: C=7daN; 0° - 80°



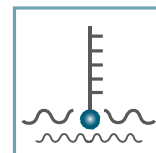
RL-0.280



d [mm]
10; 12; 12,8



C [daN]
7; 10



T [°C]
0° - 80°



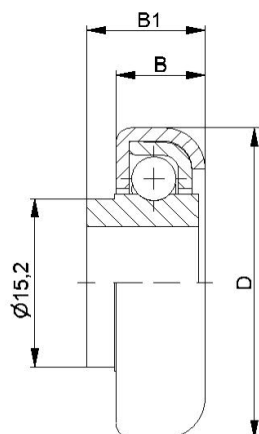
-



Carton [pcs.]

500

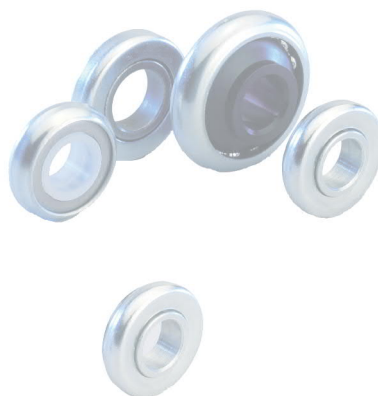
Radial Ball Bearings



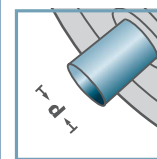
RL-0.280 with collar			
Type	D	B	B1
RL-0.280 m.B.	28,0	7,6	10,0

Other dimensions on request!

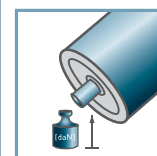
- ☛ Capsule: Steel, Zinc Plated
- ☛ Bearing Shell: Steel
- ☛ Ball, Steel
- ☛ Inner Race
 - ☛ Steel: C=10daN
 - ☛ Plastic: C=7daN; 0° - 80°



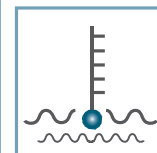
RL-0.280



10; 12



C [daN]
7; 10



T [°C]
0° - 80°



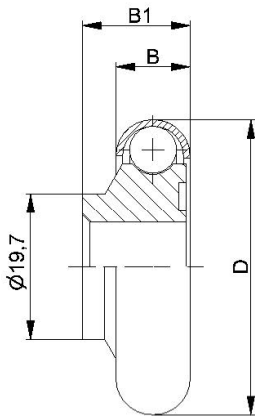
-



Carton [pcs.]

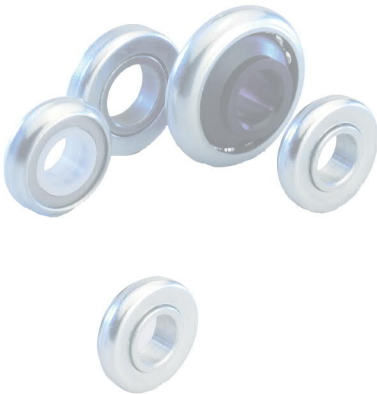
500

Radial Ball Bearings

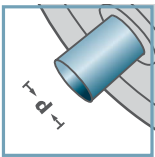


RL-0.400			
Type	D	B	B1
RL-0.400	40,0	10,0	14,5
Other dimensions on request!			

- ⚙ Capsule: Steel, Zinc Plated
- ⚙ Ball: Steel
- ⚙ Inner Race: Plastic



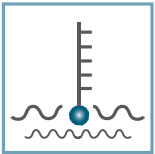
RL-0.400



d [mm]
12



C [daN]
7



T [°C]
0° - 80°



-



Carton [pcs.]

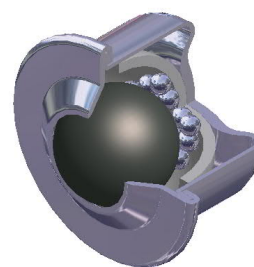
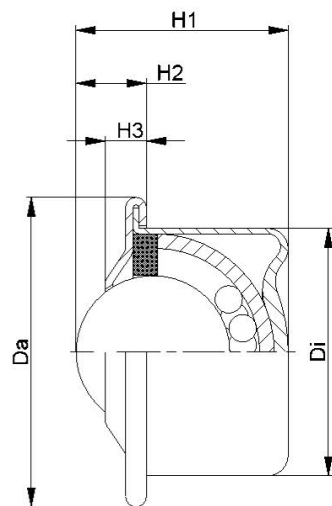
250

Radial Ball Bearings

Additional products/Attachment



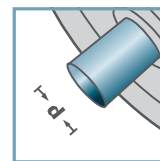
ADDITIONAL PRODUCTS



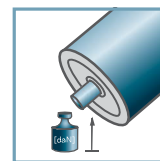
KRO						
Type	Da	Di	H1	H2	H3	Load Rating C [daN]
KRO-015L	31,0	24,0	21,0	9,5	5,5	50
KRO-022L	45,0	36,0	30,5	10,0	6,0	120
KRO-015	31,0	24,0	21,0	9,5	5,5	120
KRO-022	45,0	36,0	30,5	10,0	6,0	350



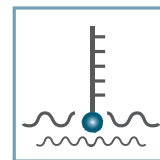
KRO-



d [mm]
-



C [daN]
50 - 120



T [°C]
-30° - 100°



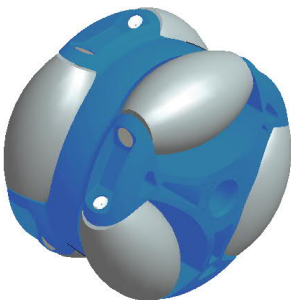
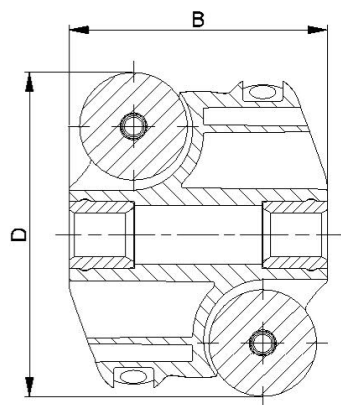
-



Carton [pcs.]

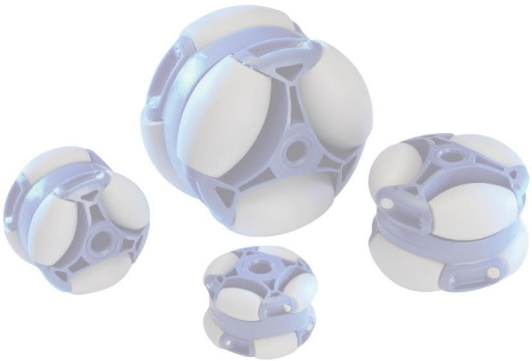
015L: 400
022L: 100

Ball Transfer Unit

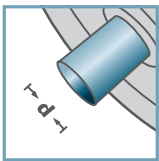


ASR-			
Type	D	B	Load Rating C [daN]
ASR-40	40	29	10
ASR-48	48	39	15
ASR-60	60	48	20
Other dimensions on request!			

- ⚙ Housing: Plastic
- ⚙ Barrel-shaped Roller: Plastic
- ⚙ Axis: 1.4301



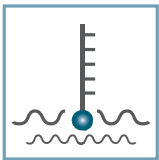
ASR-



d [mm]
8; 10; SW9



C [daN]
10 - 20



T [°C]
0° - 80°



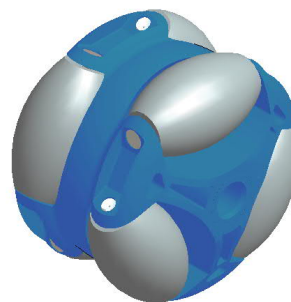
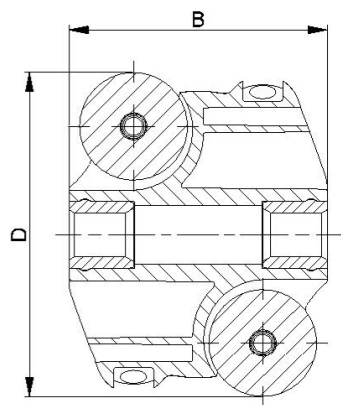
-



Carton [pcs.]

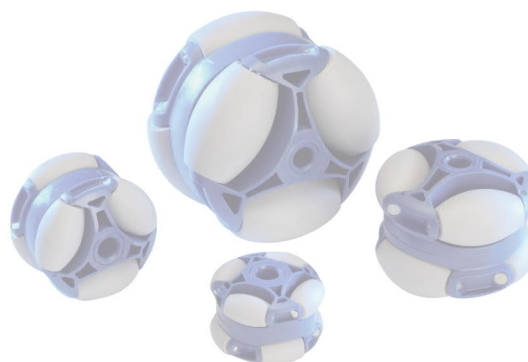
50

Polydirectional Wheel

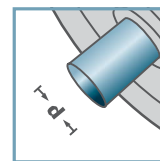


ASR-			
Type	D	B	Load Rating C [daN]
ASR-80	80	64	40
Other dimensions on request!			

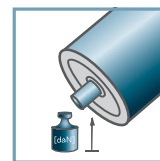
- Housing: Plastic
- Barrel-shaped Roller: Plastic
- Axis: 1.4301



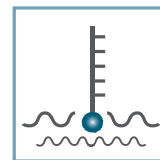
ASR-



d [mm]
8; 12;15; SW14



C [daN]
40



T [°C]
0° - 80°



-

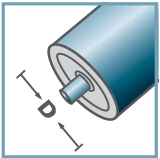
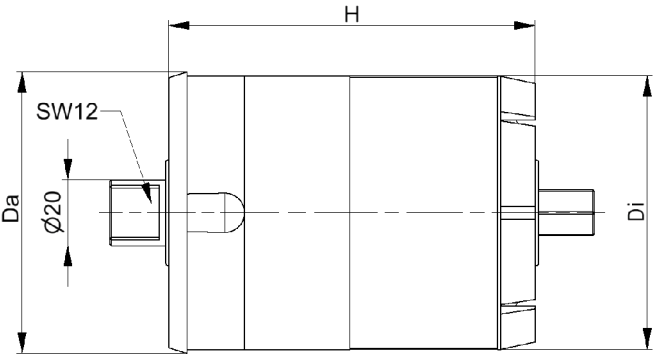


Carton [pcs.]

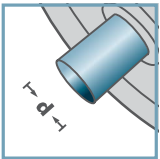
50

Polydirectional Wheel

Brake
Roller Unit



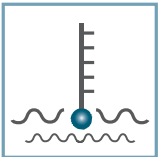
D [mm]
89



d [mm]
20



C [daN]
250



T [°C]
0° - 80°



EP2



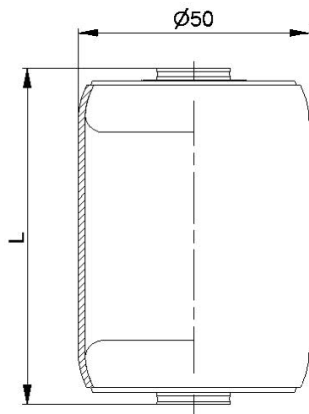
Carton [pcs.]

20

BR-89x3,0-				
Type	Da	Di	H	Load Rating [kg]
200	88,5	83	115	200
500	88,5	83	115	500
800	88,5	83	115	800
1200	88,5	83	115	1200



Brake Roller Unit

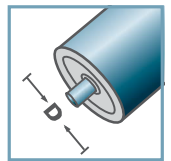


AMR-50x1,5.20		
Type	L	Load Rating C [daN]
AMR-50x1,5.20-66	66	160
AMR-50x1,5.20-73	73	160
AMR-50x1,5.20-80	80	160
AMR-50x1,5.20-100	100	160
Other dimensions on request!		

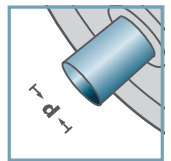
- Tube: Steel, Zinc plated
- Metal Roller Bearing MTR-20



AMR-50.20



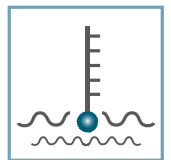
D [mm]
50



d [mm]
8; 10; 12; SW11



C [daN]
160



T [°C]
0° - 100°

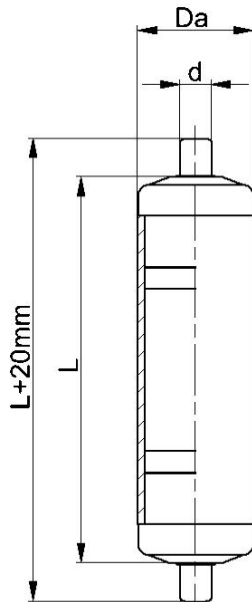


Oil

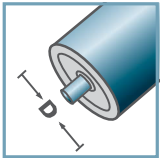


Carton [pcs.]

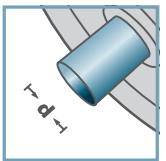
Metal Roller



AKR-00/01



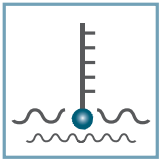
D [mm]
20; 30; 40



d [mm]
6; 8



C [daN]
10; 15



T [°C]
0° - 80°



Carton [pcs.]

AKR-00/01				
Type	D	d	L max.	Load Rating C [daN]
AKR-20x1,5.00.L	20	6	300	10
AKR-30x1,8.00.L	30	8	400	15
AKR-40x2,3.00.L	40	8	400	15
Other dimensions on request!				

- Tube: Plastic
- Plastic Roller Bearing KTR-00/01 with spring axis



Plastic Rollers with Spring Axis